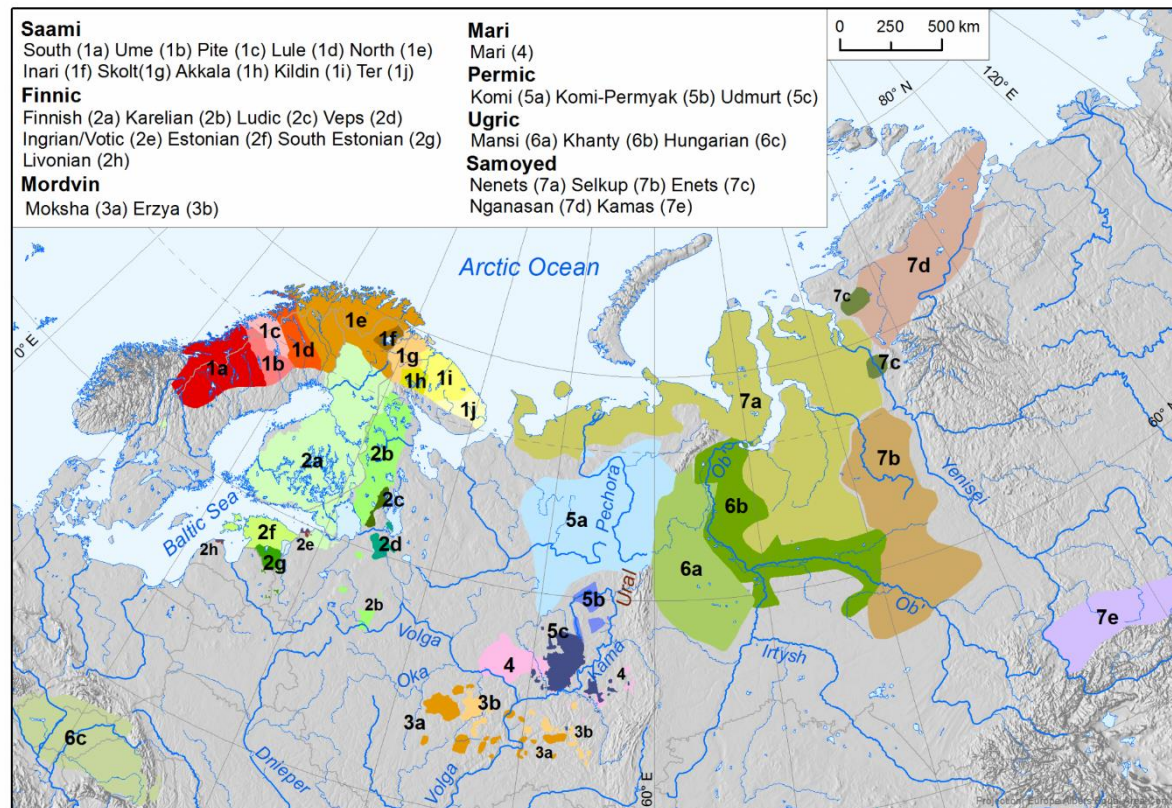


URKO: Uralilainen kolmio

Uralic triangulation

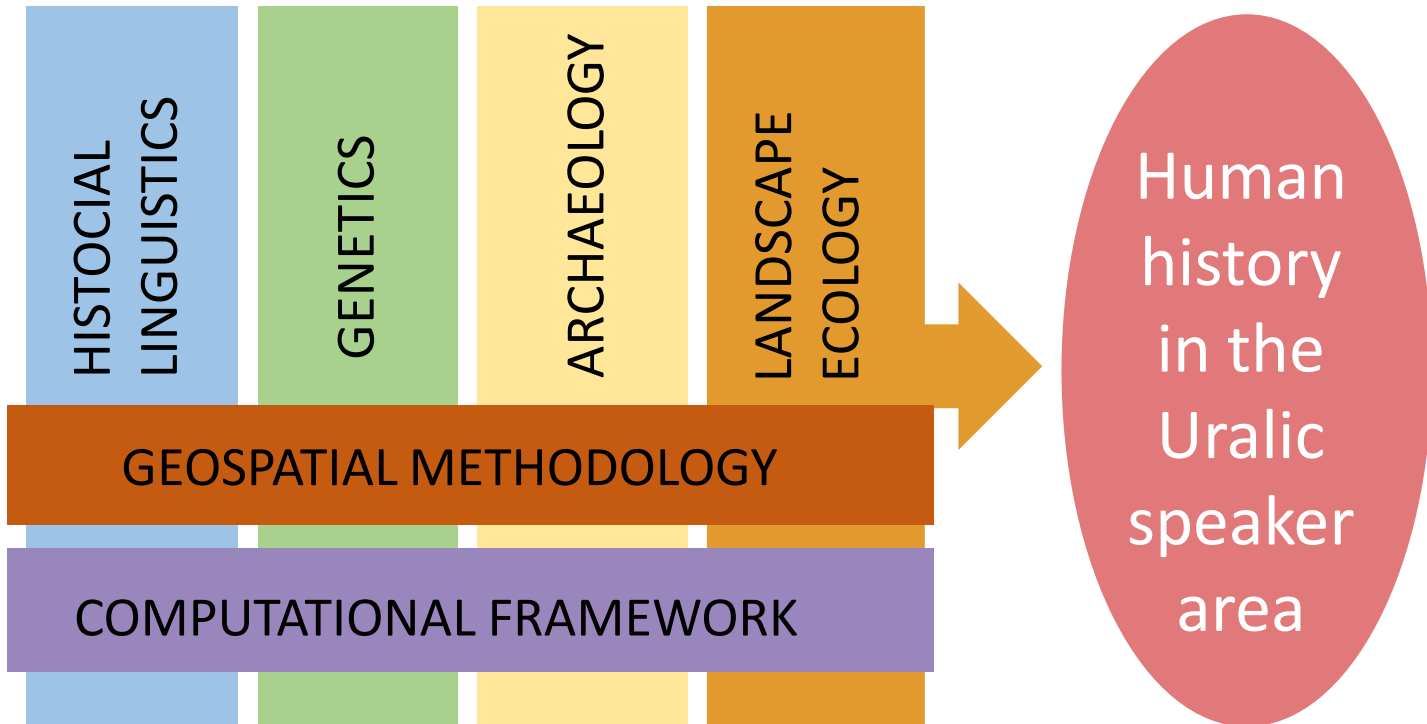
Consortium PI's: Päivi Onkamo, Sirkka Saarinen, Harri Tolvanen

Coordinating researcher: Outi Vesakoski



The Big Picture

Kirch & Green 2001: "Triangulation" is reconstructing human history through data and inference from genetics, linguistics and archaeology



URKO is based on

GENETIC PAST

ArGeoPop

*Finnish prehistory
reconstructed in the light of
archeological and
population genetic data*

SUGRIGE

*Ancient genes of North-
Eastern Europe*

PI Päivi Onkamo

AKA 2009-2013; Jane ja
Aatos Erkko Foundation
2017-2021

LINGUISTIC PAST

BEDLAN

*Biological evolution and
diversification of languages*

PI Outi Vesakoski
Kone Foundation projects

Interdisciplinary data

KIPOT JA KIELET

Pots and languages

PI Päivi Onkamo,
Visa Immonen,
Sirkka Saarinen, Outi
Vesakoski
UTU 2018-2021

Interdisciplinary consortium

URAHOLI review (ms)

*The human history of the western Eurasian Taiga:
Uralic languages, genes and societies*

Large authorship, PI Outi Vesakoski
Ella and Georg Ehrnrooth Foundation, 2016. 2018

URKO consortium parties

Dept. of Biology

Prof. Päivi Onkamo
+ Post doc in
computational
sciences:

Human genetics
Probabilistic statistics



Dept. of Finnish and Finno-Ugric languages

Prof. Sirkka Saarinen
+ Dr. Outi Vesakoski

Uralic linguistics
Computational
linguistics



Dept. of Geography and geology

Univ. lecturer's Harri
Tolvanen
Tua Nylén
+ PhD student

Biogeography
Spatial modelling



URKO's aims

- 1) User interfaces
- 2) Teaching digital humanistics
- 3) Studies on integrative human past

URKO's implementation

Dept. of Biology

Post doc hired

Archaeological data

Cooperation with the
Finnish Heritage
Agency, Museovirasto

Chronological studies
on Uralic past

Computational
expertise

Dept. of Finnish and Finno-Ugric languages

Post doc hired

Language typological
data

Cooperation with
Uppsala University,
Tartu University and
JENA MPI

Computational studies
on linguistic past

URKO coordination

Dept. of Geography and geology

PhD student hired

Cartographical data of
language speaker
areas

Co-operation with
University of Oulu and
Zürich

Spatial studies of
Uralic past

GIS expertise

User interfaces

**Digitized database of
Finnish archeological
artefacts,
Muinaisjään-
nöskisteri**

*Typological classification
Photos
Coordinates
Etc.*

Easy access to catalog of
artefacts, until know
physical visit to museum
collections needed.

Possibility to vigorous
statistical and spatial
analyses of the findings



Eura Luistari, burials AD 600-1100



Suomussalmi, Viking Age



Neolithic (ca. 5200-1800 calBC)
elk-head sculpture



Bronze Age (ca 1800-500
calBC) rhomb axe

User interfaces

Two typological data sets of Uralic languages

- 1) Uralic languages into global Granbank database (195 traits)
- 2) Within Uralic variation in typology (150 traits)

Binary (yes/no) answers to question such as does language X has vowel harmony

No such data existed earlier.
Important for research and teaching.



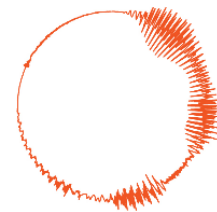
Data from grammar books and by interviews; Miina Norvik & Eva Saar & an informant



Karl Pajusalu



MAX-PLANCK-GESELLSCHAFT



glottobank

User interfaces

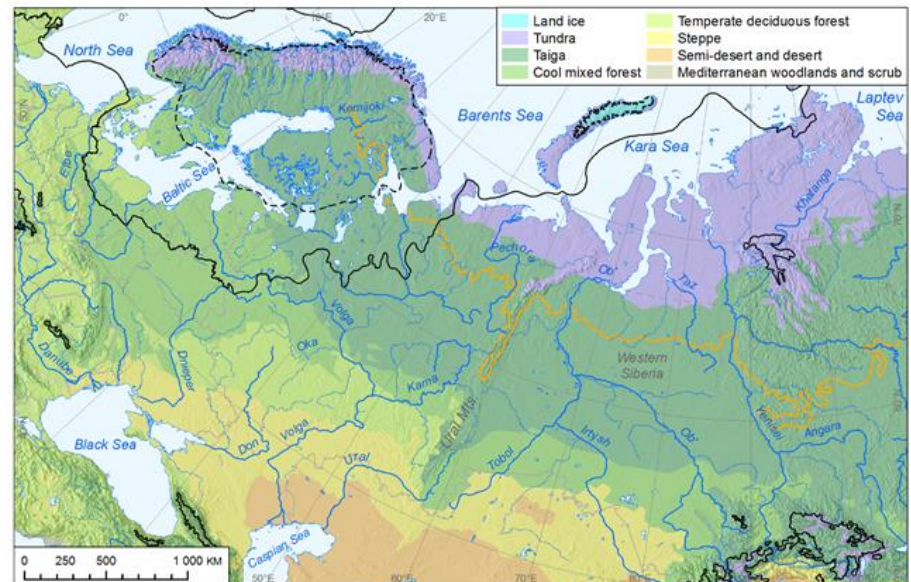
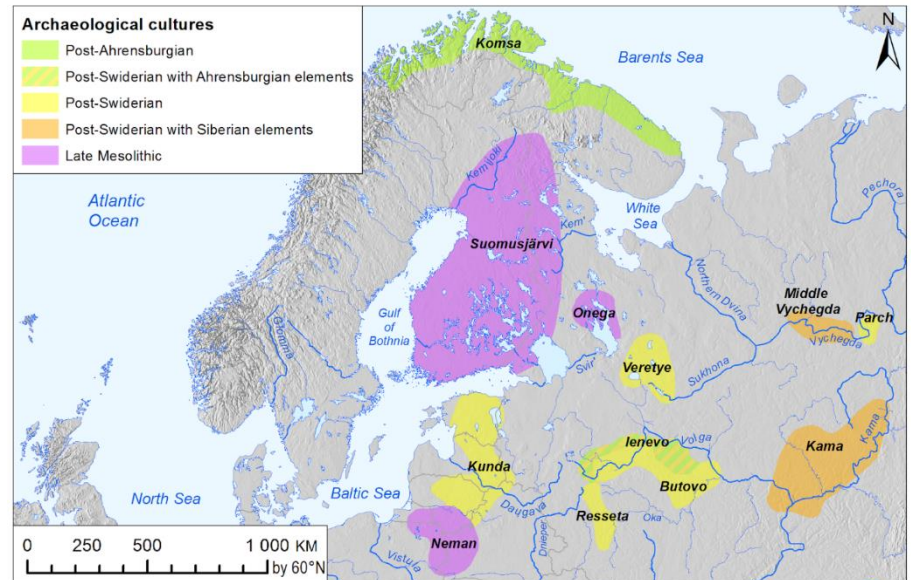
Spatial Data of Uralic Speaker Area

- 1) Cartographical Database of Uralic Languages
- 2) Environmental, archaeological and genetic data

Classical and current speaker areas digitized from literature and up-dated with the authorship of Oxford Guide for Uralic languages

Other data collected in UraHoli review process

No earlier digital spatial data existed earlier.



URKO's research

Linguistic inheritance: **Vertical and horizontal transfer of material** within Uralic family and with Uralic languages and its neighbours. Typological data sets analysed with so called Tiger partition analyses (developed in Syrjänen et al. ms).

Test of different **chronological scenarios** of spread of Siberian genetic ancestry, Finnic languages and Tarand and other burial practice around Baltic Sea area in the Early Iron Age (innovated from Lang 2018 hypothesis), studied with Bayesian chronology paradigm

Applying ecological niche hypothesis to human spread: Are human (cultural) **distribution ranges and dispersal constrained by biogeographical environment?** Studied with species distribution modelling.

KIITOKSET



Check KiKi in
Facebook!



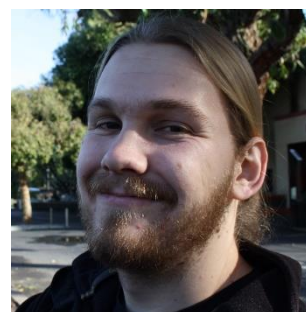
Petro Pesonen



Ulla Moilanen
Jarkko Saipio
Richard Kowaleck



Miina Norvik
Minerva Piha
Eva Saar



Luke Maurits



Terhi Honkola
Timo Rantanen

