

HELSINGIN YLIOPISTO
 HELSINGFORS UNIVERSITET
 UNIVERSITY OF HELSINKI
 ALEKSANTERI-INSTITUUTTI
 ALEKSANDERINSTITUTET
 ALEKSANTERI INSTITUTE

ASSESSING INTERMEDIARY EXPERTISE IN CROSS-BORDER ARCTIC ENERGY DEVELOPMENT

ARCTIC ENERGY FUTURES

New initiatives connected with Arctic oil and gas development bring new processes, including the increasingly important role played by conceptualizations of the future in consultant advisory service. This project introduces novel approaches to the study of experts, institutions and forms of knowledge that seek to influence energy development in the Arctic.

CONSULTANT EXPERT “CULTURES”

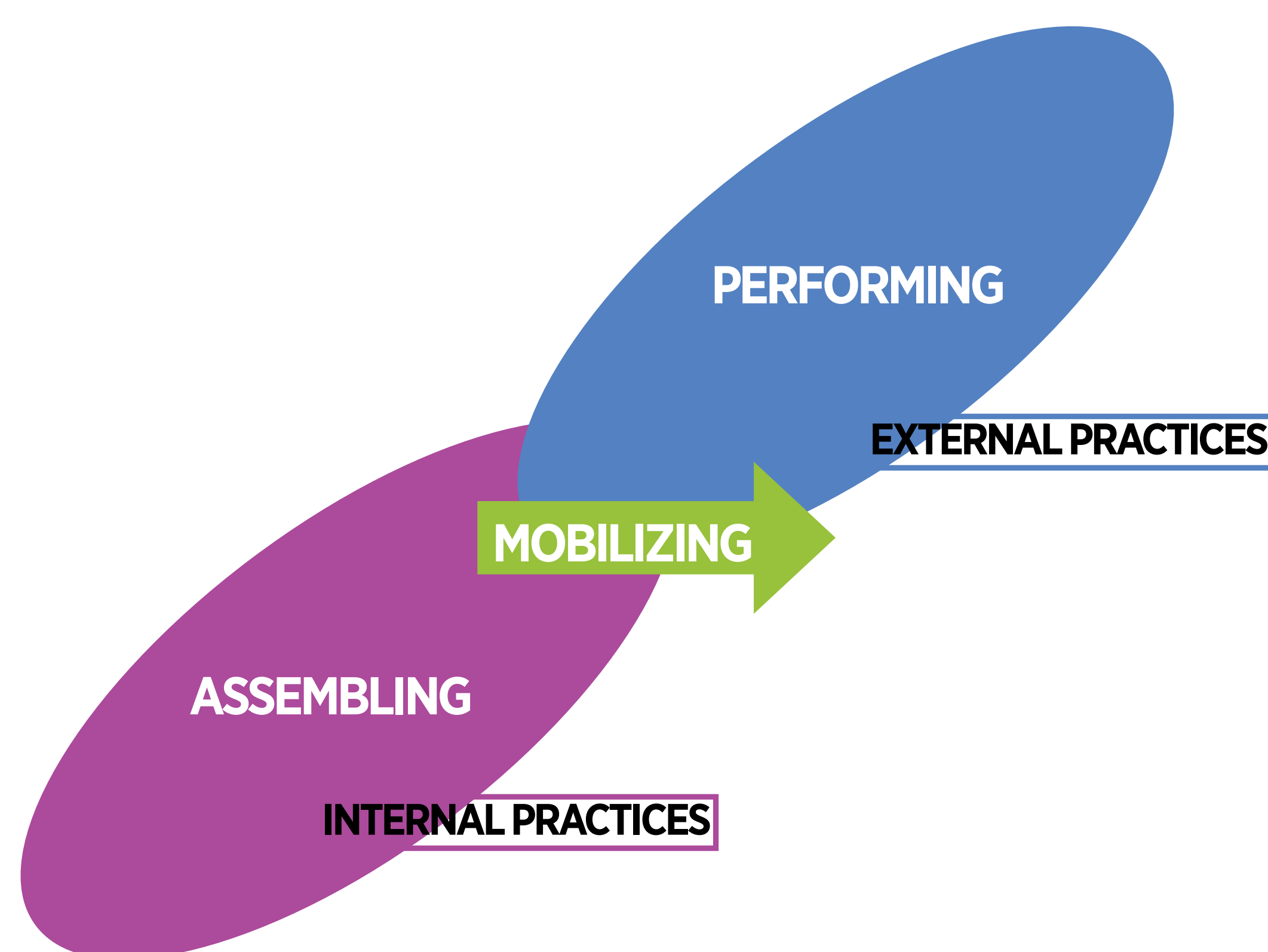
We plan to improve the state of theory and knowledge in relation to how intermediaries (consultants) engage in valuation practices that drive the location and content of pivotal conversations on Arctic oil and gas extraction. We consider energy consultants “intermediary actors” because of their success in mobilizing expectations.



CAMBRIDGE ENERGY ANNUAL CONSULTING MEETING

ASSEMBLING, MOBILIZING, PERFORMING...

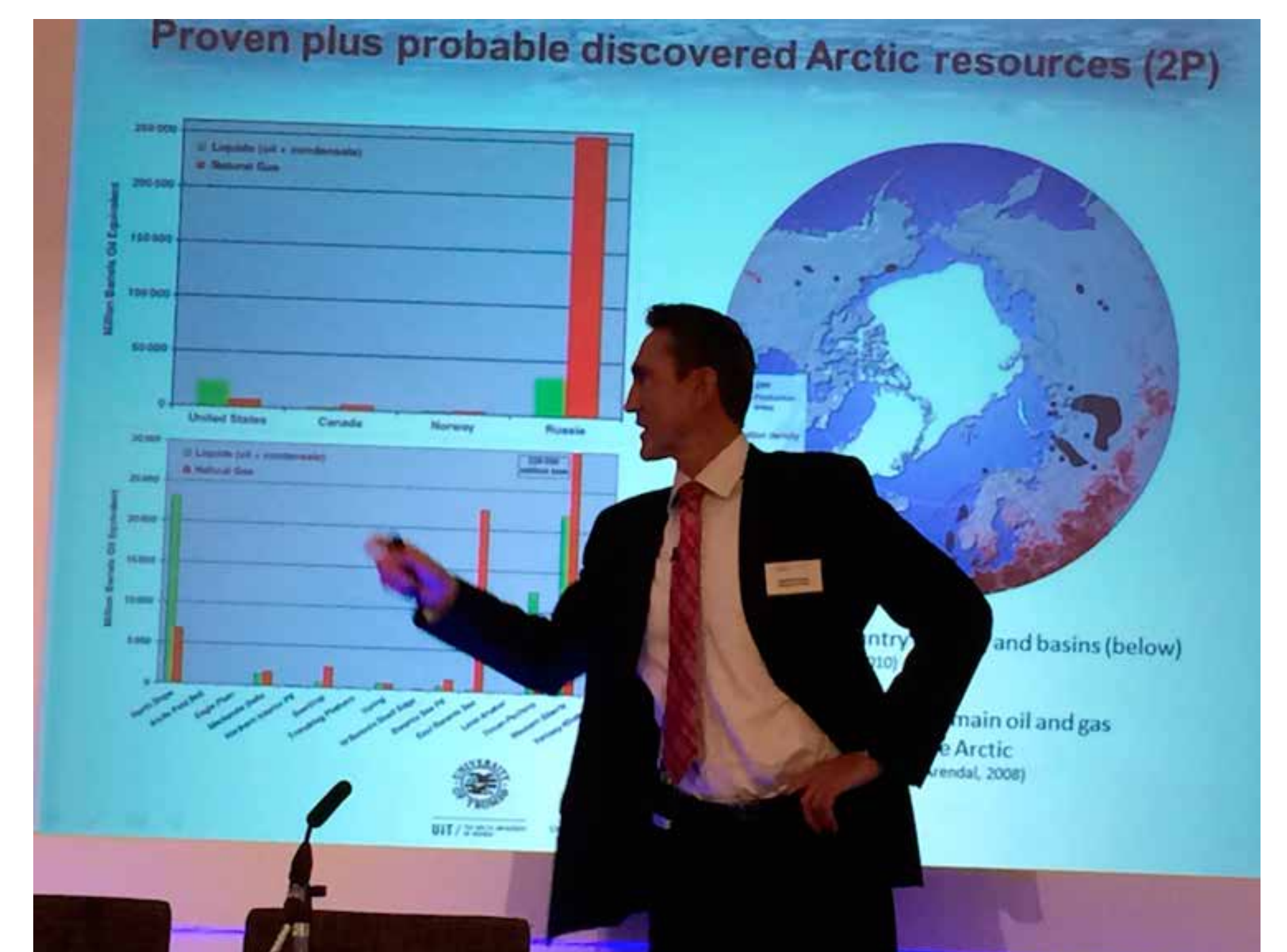
We hypothesize that intermediary experts have three practices for visualizing Arctic energy futures that elevate interests of industry to actionable views: assembling, mobilizing, performing.



ASSEMBLING We plan to investigate forecasting techniques to reveal how consultants build relationships with Arctic futures through practical understandings but also through IT systems.

MOBILIZING We plan to study how these “internal” activities lead to products that are interpreted as convincing energy futures by the public and private clients.

PERFORMING We are attending key events to understand how consultants distribute their futures.



The A-M-P model suggests an accretion of a new material-epistemic investment, that is, a historical development (!) managing the insecurities associated with Arctic energy planning.

PARTICIPANTS

Dr. Veli-Pekka Tynkkynen, Director
 Dr. Arthur Mason, Researcher
 Dr. Daria Gritsenko, Postdoctoral Researcher
 Hilma Salonen, PhD Student

We plan data gathering and analysis activities, including site visits at consulting firms, attendance at key networking events & sub-projects for new understandings of Arctic extractive and marine transport developments.