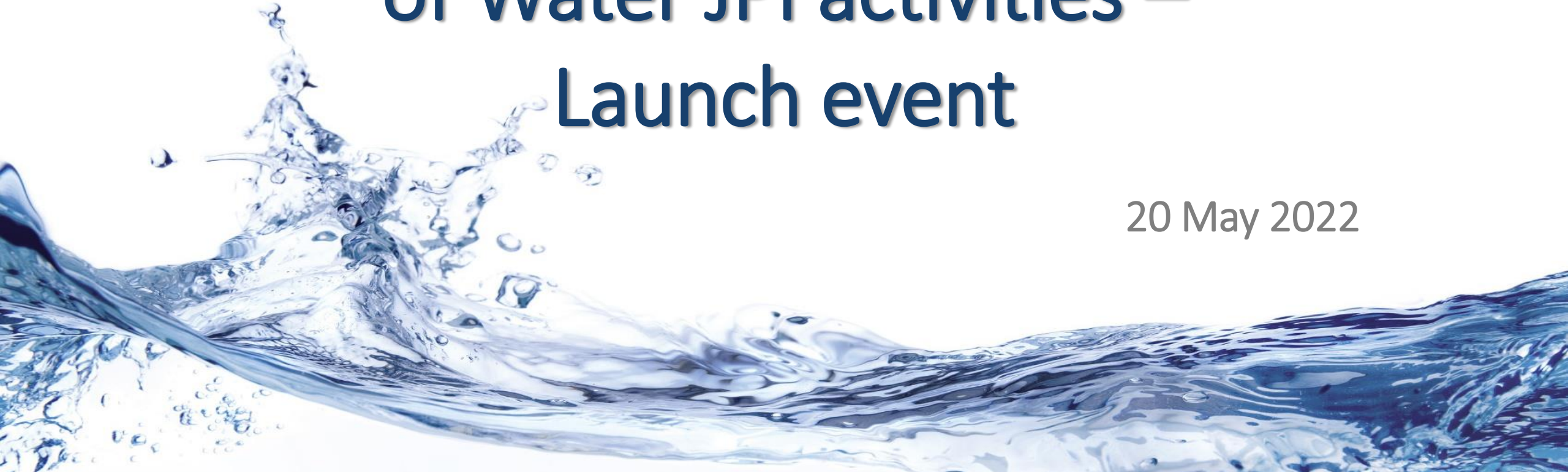




Global impact assessment of Water JPI activities – Launch event

20 May 2022



Welcome on behalf of the Academy of Finland team!



Laura Raaska



Anni Kleino



Laura Forsström



Miia Farstad



Meri Back



Kata-Riina Valosaari

Welcome to the launch event - practicalities



Keep your video connection off



Keep your microphone muted



Use the chat for questions



The seminar is recorded for organisers use only

Programme

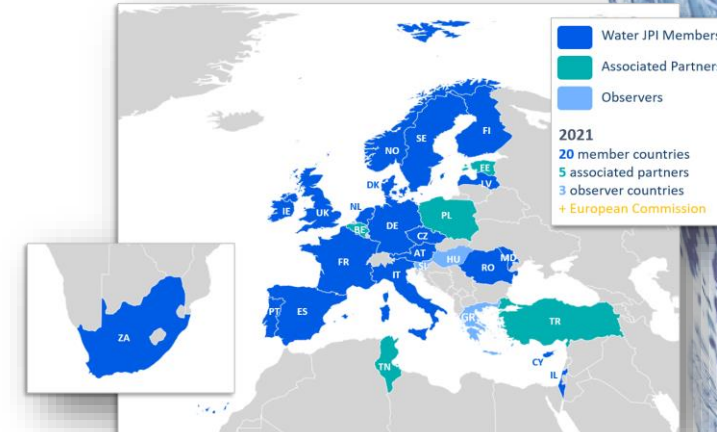
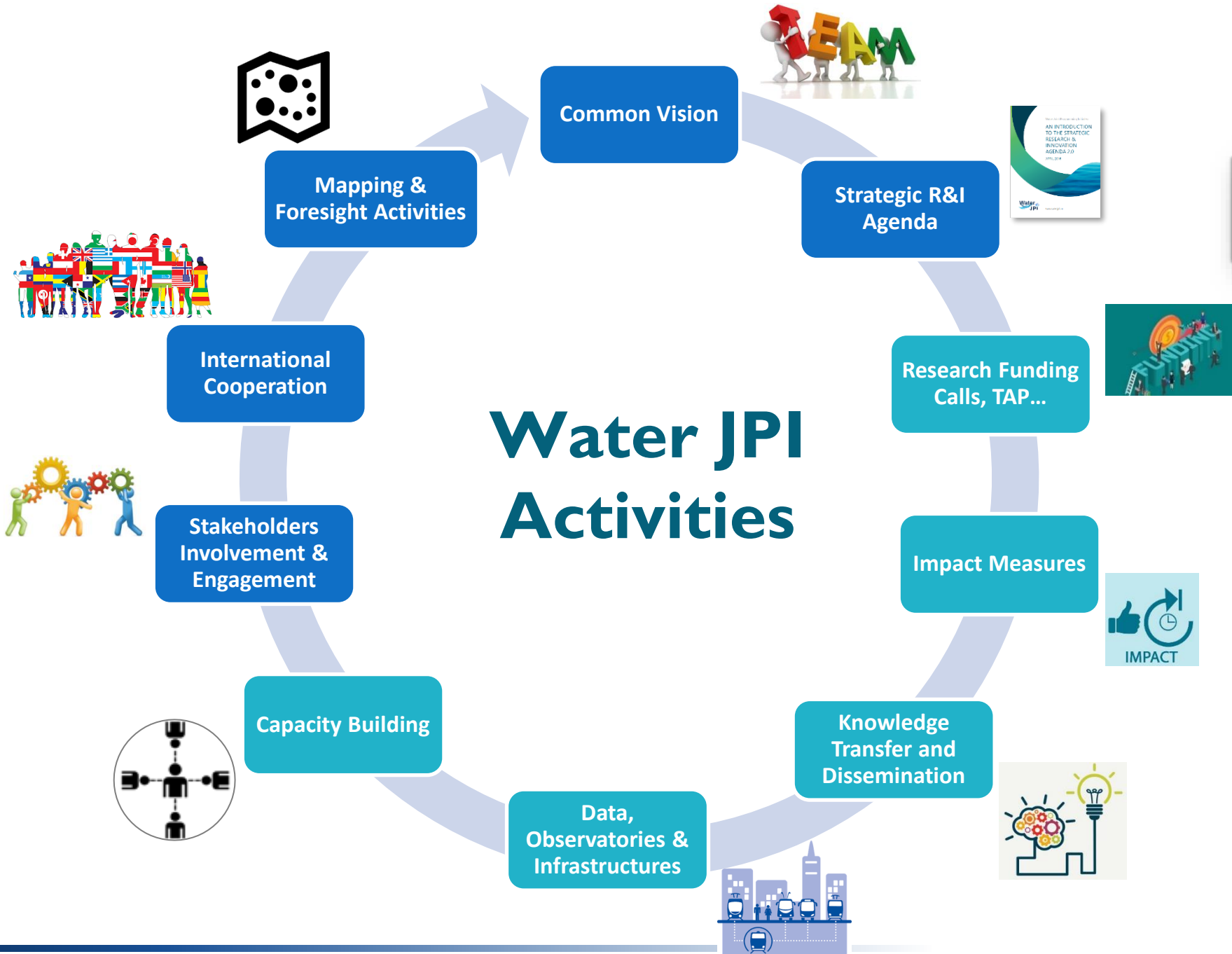
10:00 -10:15	WELCOME ADDRESS	<i>Kata-Riina Valosaari, AKA</i>
10:15 -11:15	RESULTS OF IMPACT ASSESSMENT	<i>Leonidas Antoniou & Eeva Furman</i>
11.15 – 11.30	<i>Coffee break</i>	
11.30 – 12.30	<p>PANEL DISCUSSION</p> <ul style="list-style-type: none">- Water JPI perspective, Maurice Héral- Water JPI advisory board perspective, Fiona Regan- Global perspective, Sylvester Mpandeli- Future perspective, Olivier Bouc- Stakeholders/industry perspective, Prisca Haemers <p>Questions / Comments from the launch attendants</p>	<i>Chaired by Anni Kleino, AKA</i>
12.30 – 13.00	CONCLUDING REMARKS	<i>Panagiotis Balabanis, European Commission</i>

Water challenges for a changing world

Water JPI

- ▶ The Joint Programming Initiative **Water Challenges for a Changing World** was established in 2011
- ▶ Aim is to tackle the ambitious grand challenge of **Achieving sustainable water systems for a sustainable economy in Europe and abroad**
- ▶ Main goals to achieve
 - ▶ Better results and optimization of public funds through the alignment of water research agendas and programmes at European and international level
 - ▶ Reduce the fragmentation of efforts by Member States and mobilise skills, knowledge and resources, with a view to strengthening Europe's leadership and competitiveness on water research and innovation

Water JPI Activities





Impact Assessment of Water JPI actions and activities

IC4WATER CSA - Task 6.3. Impact assessment of the joint actions and JPI activities

“The task will ... specifically nominate a group of highlevel experts ... to assess the added value and the global impact of the Water JPI activities and actions to the water community based on the criteria produced. ... The results of the impact assessment of both activities and actions will be presented in the Global Impact Assessment report launch event...”

- ▶ **Global impact assessment report launch event 20.5.2022**
- ▶ **Report on impact assessment of Water JPI activities in May-June 2022**

Water JPI Impact Assessment

Eeva *Furman* & Leonidas Antoniou





Contents



Evaluation Framework

(Scope, Background, Panel)

Methodology

(Desk research, Interviews, Survey)

5+1 Dimensions

(Alignment, Internationalisation, Knowledge, Governance, Impact, Future)

Future Perspectives

(Key Issues, Overall Assessment, Main Recommendations)



Evaluation Team



Academy of Finland

Laura Raaska

Anni Kleino

Kata-Riina Valosaari

Laura Forsström

Miia Farstad



Evaluation Process

SELF - EVALUATION

Autumn 2020

- Preparatory work.
- Definition of **evaluation framework**.



Spring – Summer 2021

- Maturity maps, key documents & data.
 - **GB Survey**.
- Preparation of 2nd phase.



EXTERNAL EVALUATION

Sep – Nov 2021

- Review and analysis of data & documents.
 - **Narratives**
- **Interviews** with key persons.



Dec. 2021 – Jan. 2022

- Discussion of **key issues** for **5+1 dimensions**.
 - **Conclusions** and **Recommendations**.



PUBLICATION

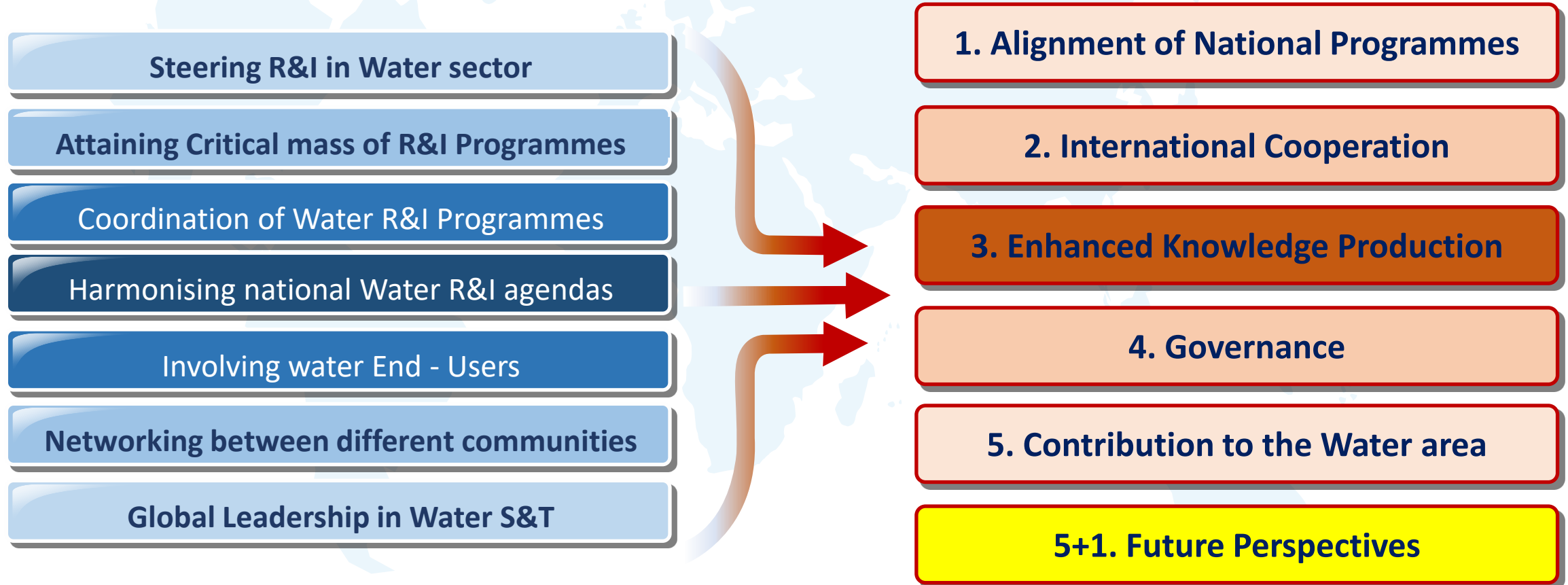
May 2022





Basis of Evaluation

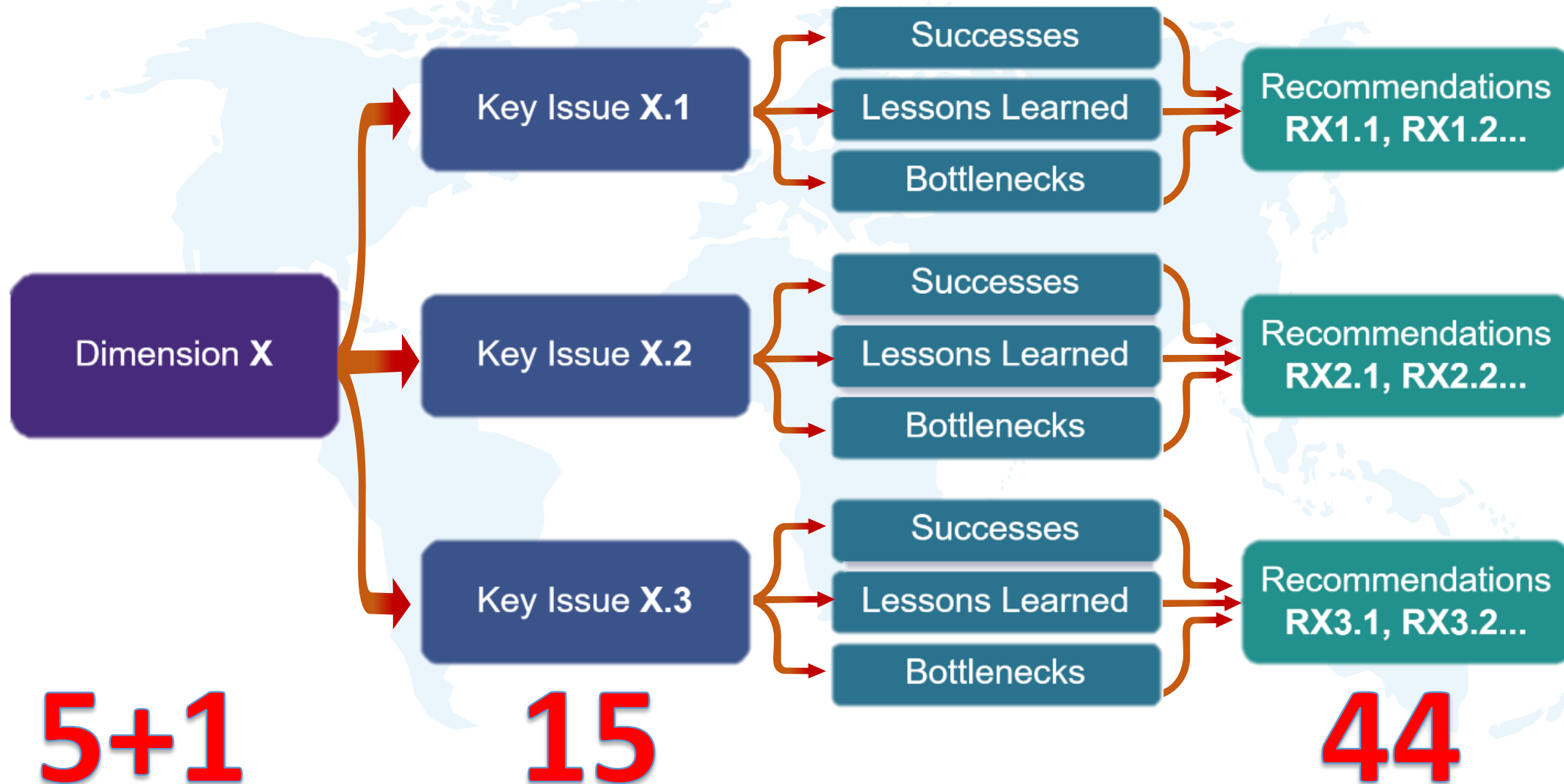
“from Objectives to 5+1 Dimensions...”



The Dimension 5+1 “Future Perspective” was included by the Panel to comply with its mandate...



Flow of Analysis





Recommendations - example

Code	Recommendations	Water JPI	MS	EC	Water 4All
Dimension 1 – Alignment					
R1.1.1	Alignment with the SRIA when planning their national calls.		X		
R1.1.2	SRIA as the basis for setting national priorities.		X		
R1.1.3	Monitor national research activities towards the SRIA.	X	X		X
R1.1.4	Intranet specific section on alignment.	X			X
R1.1.5	Dissemination of results to high political level.	X	X	X	X
R1.2.1	Monitoring progress of the SRIA (sub) themes.	X			X
R1.2.2	Discussion on the relevance of neglected topics in future SRIA.	X		X	X
R1.3.1	Connect Platform with the other tools and knowledge hubs	X			X
R1.3.2	New mechanisms to expand the mapping exercise.	X			
R1.3.3	Explore further collaboration with ESFRI.	X	X	X	X



D1. Alignment

“Better results and optimisation of public funds are obtained through the alignment of water research agendas and programmes at European and international level.”



D1. Alignment



KL1.1

Adaption of National Research Agendas, Priorities, Activities and Funding...



- agreement of all Members on the two Vision documents outlining the objectives to be achieved by 2020 and by 2030
- mobilization of national funds was fostered, with many countries from Europe and abroad participating in Calls.



- Half of the participating countries can be considered as strongly engaged - involved in four or more calls
- National barriers hampering the participation and financing of joint activities - one, if not the main, inadequacy of the initiative





D1. Alignment

KI.1.2

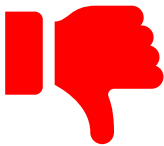
Committed SRIA



- 4 SRIA's resulted from a comprehensive, interactive process, including the consultation, and consensus of a very broad base of stakeholders.
- SRIAs basis for Joint Calls, Knowledge Hubs, TAP actions and recommendations to EC

KI.1.3

Shared or Coordinated Use of R&I Infrastructures



- 108 organisations in the second mapping exercise
- little data/information on shared or coordinated use of water R&I infrastructures or other resources.
- R&I infrastructure has not been as fully demonstrated and disseminated for use.



D2. Internationalisation

The Water JPI's grand challenge of
*“achieving sustainable water systems for a
sustainable economy in Europe and abroad”*
emphasises the international dimension of its
remit and the rationale for its activities.



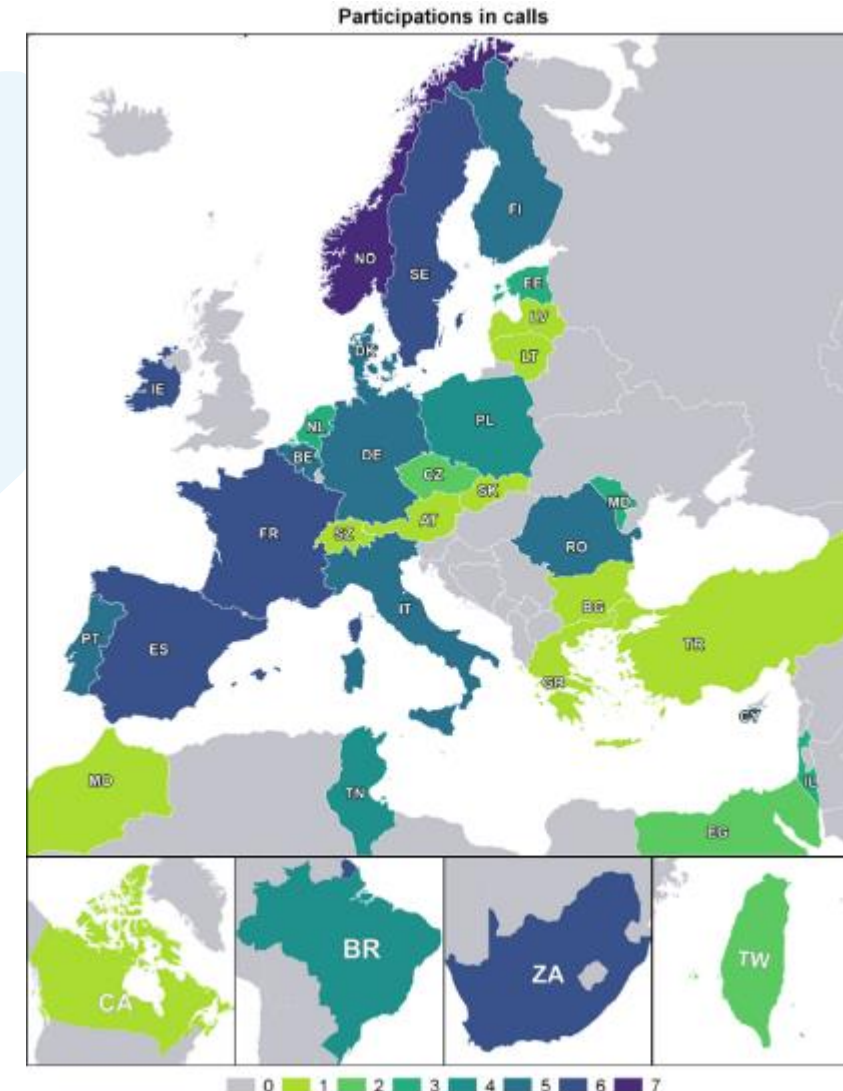
D2. Internationalisation

KI.2.1

Extending WJPI Membership to non-EU countries



- the cooperation is grounded in **mutual reciprocity and shared interests** both in terms of the R&I topics and the types of activities to address them.
- To date, the Water JPI's approach to extend membership to non-EU countries was met with steady success.
- **South Africa and Tunisia** have gradually increased their participation in the Water JPI activities, including the joint calls.
- **Canada:** successful cooperation has led to Canada being approached by other JPIs.
- **Main bottlenecks** identified are relate to the lack of agreement on intellectual property rights management (USA), the switch from bilateral relations to the Water JPI's multilateral forum for decision-making (India) and the lack of accessibility and commitment of relevant funding agencies (China).





D2. Internationalisation

KL.2.2

Building Cooperation with Relevant European and Global Initiatives



- launch of **joint transnational calls** and the development of **joint activities, including Knowledge Hubs, networking, strategy development.**



- **lack of an enabling environment** for implementing joint international activities and partnerships (lacking political commitment, respect, trust, resources), and the **complexity of the European research and innovation landscape** and **funding instruments** since not all initiatives can participate in joint calls.

KL.2.3

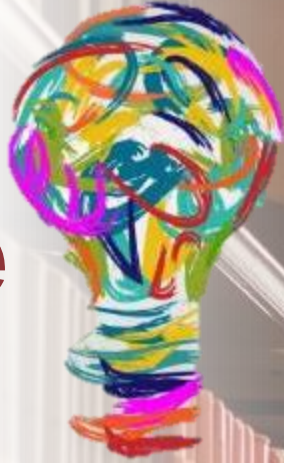
Global Coordination / Leadership Role



- IC4Water project has been implementing a range of highly relevant activities, including undertaking a comprehensive mapping of key players and potential partners.
- Water JPI funded projects do generate impacts at international fora, however the scale of these impacts remains limited due to the lack of a targeted approach and having the appropriate connecting mechanisms in place.



D3. Enhanced Knowledge Production



“...there was an enhancement of knowledge and a focus on the issues of most concern, and I felt that the... scientific community was keen to share knowledge and expertise and even resources.” (Padraic Larkin)



D3. Knowledge Production

KI.3.1

Science-Based Knowledge Productivity



KI.3.2

Relevance of Water JPI Funded Projects with EU priorities



- Lot of cases demonstrate **clear impact on science policy**.



- One of the most important achievements of the Water JPI, highlighted by many, is the **creation of a research community of EU partner scientists** to address common water research agendas.



- A major success was the **research conducted in manageable-size projects**.



- To date, the completed **projects have been productive in numbers and quality** of scientific publications, educating PhD and postdoctoral students, and strengthening gender balance among research teams.



- **limited assessment of Calls for Proposals and their outputs**. The impact of research projects as part of Calls is not yet known because of a lack of impact analysis criteria/tools, and project final reports.





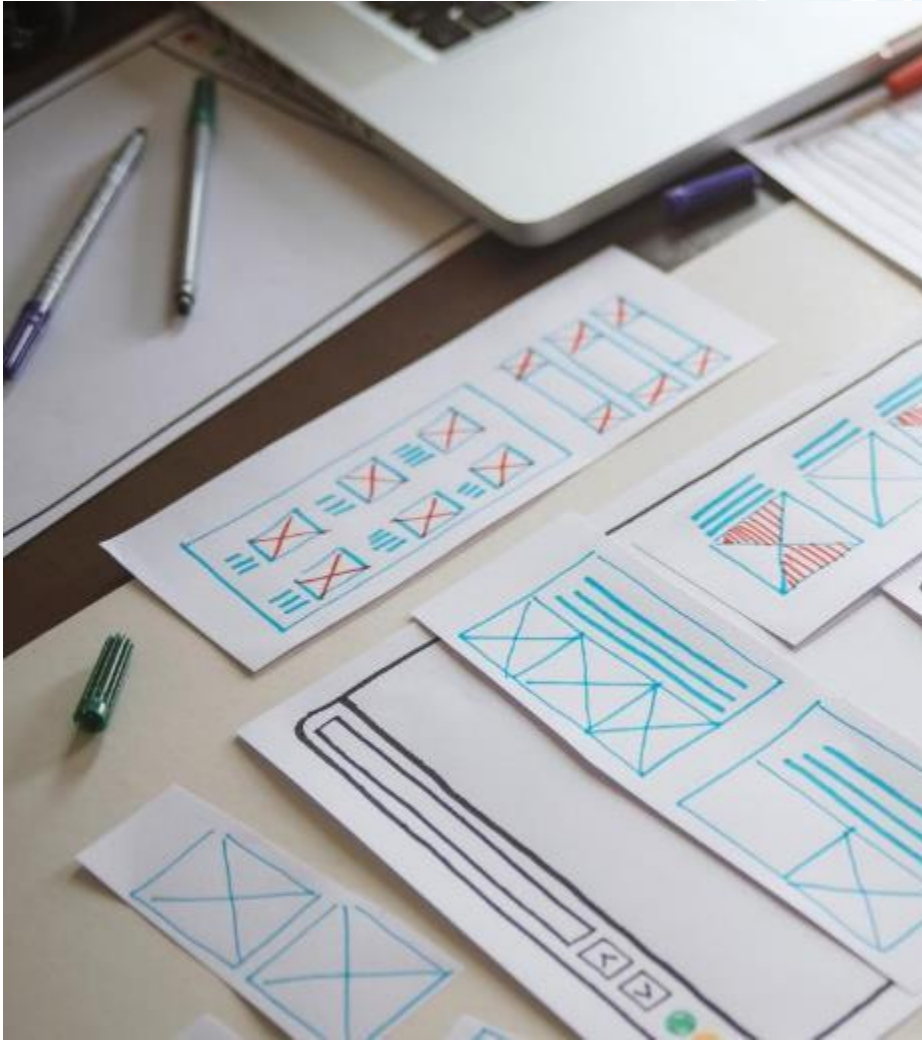
D4. Governance

“...it needs time to build trust between members, the key basis for such partnership, and be in a routine scheme generating impacts. But the benefits are also important: opening to broader communities, larger solutions...”

(Dominique Darmendrail)



D4. Governance



KI.4.1

Design and Implementation of Key Guiding Documents



- **effective, efficient and inclusive process** for the guiding framework and activities.



- Key documents (Vision, SRIA and implementation plan) were **all published on time and within the agreed timeframe**. The frequency of revision of the Vision and SRIA documents is generally considered to be successful.



- **also successful in taking a forward-looking, consultative and participatory approach,**

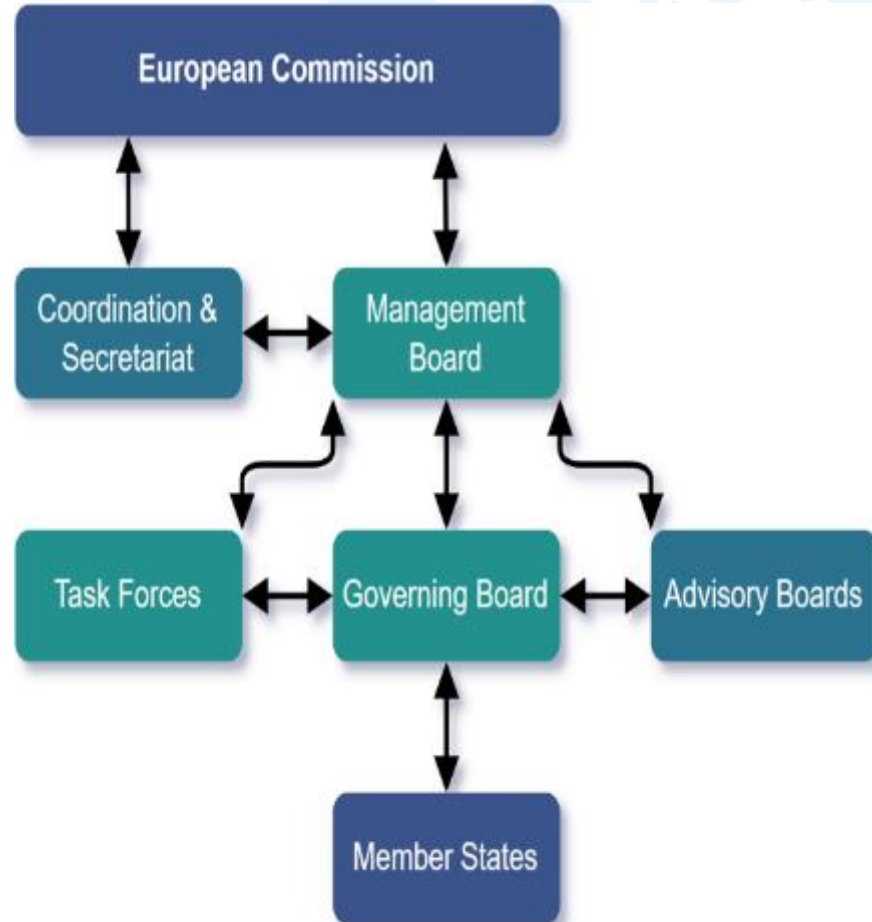


- The **protocols established** for Joint Calls for Proposals, review of submitted proposals and administration of funded projects is **deemed appropriate** and proportional with a 'light' administrative burden to the research investigators.





D4. Governance



KI.4.2

Governance Structure, Coordination and Decision-Making



- governance with clear assignment of roles and responsibilities, and modalities for partner country participation



- While remaining stable overall in terms of structure and key characteristics, the governance set out by the ToR was relatively flexible and was modified to adapt to bottlenecks identified



- a good level of coordination and communication.



- successful in its integrity and transparency



- certain level of inertia in high-level decision-making





D4. Governance

KL.4.3

Level of Geographical Representativeness, Commitment and Resources



- **good representation of countries** at EU level and also some external partners
- certain level of **stability, consistency and coherence** ensured by having a dedicated Coordinator overseeing a centralised Secretariat
- **low representation of non-EU partner countries** in some activities
- **insufficient level of representation** from some member country institutions within the GB


KL.4.4

Stakeholder Engagement, Representativeness, Inclusiveness and Partnerships



- Elaboration process for SRIAs has been participatory and inclusive
- Institutionalised stakeholder engagement with the Abs has been successful.
- ABs: ensuring dialogue with stakeholders - link with broader constituencies and communities.
- good connections with other JPIs.
- lack of representation of some scientific expertise in the GB - limited engagement with some stakeholders such as industry, end users and regulators.





D5. Contribution to the Societal Challenges of Water Area

Overall, emphasis on contribution to societal challenges has been clearly defined.

However, the research has not been synthesised into a form understandable and relevant to the wider audience and especially to the decision makers, and further communicated to the end users.



D5. Contribution to the Societal Challenges

KI.5.1

Influence on Factors and Policy Making



- **SRIAs' contents have contributed** to projects tackling societal challenges with their research questions.
- innovative approaches: **Knowledge Hubs & including business actors in the ABs.**
- material analysed **indicated opportunities to bring forward to policy making** the outputs of projects.

BUT

- It is **difficult to find even information** about the activities and outputs of each project,
- **No clear strategy relating to an assessment system** has been developed to monitor the degree to which the goal to contribute to societal challenges has been implemented.
- This could have been a useful internal learning method as well as useful material for the development of policies and practices...



...strong emphasis on contribution to societal challenges in its vision...





D5+1. Future Perspectives

The debate on the future of the Water JPI is mainly driven by the change that is emerging in the European Partnerships landscape within the Horizon Europe Programme.



D5+1. Future Perspectives

SCENARIO I

Water JPI continues its work as an initiative of its member countries, serving the Vision 2030 “Together for a Water-secure World”, **implementing the whole range of the activities foreseen by the SRIA and the Implementation Plan.**

SCENARIO II

Water JPI retains its autonomy & adapts its strategy to **complement the Water4All** framework of activities. It functions as a transnational scientific body undertaking sub-activities of the Water4All, (scientific support, coordinating ABs, etc.)

SCENARIO III

Water JPI is **fully integrated into the Water4All**. Member countries become **full members of the Water4All**, participate in decision-making, contribute to the implementation of the activities and enjoy the benefits of the produced impact.

Strategy

Funding

own resources of the member countries and through **competitive programmes**

Combination of **national funding and transfer of Water4All resources** (significantly reduced).

HE Programme & national resources in line with the European Partnership funding framework.

Overall Assessment

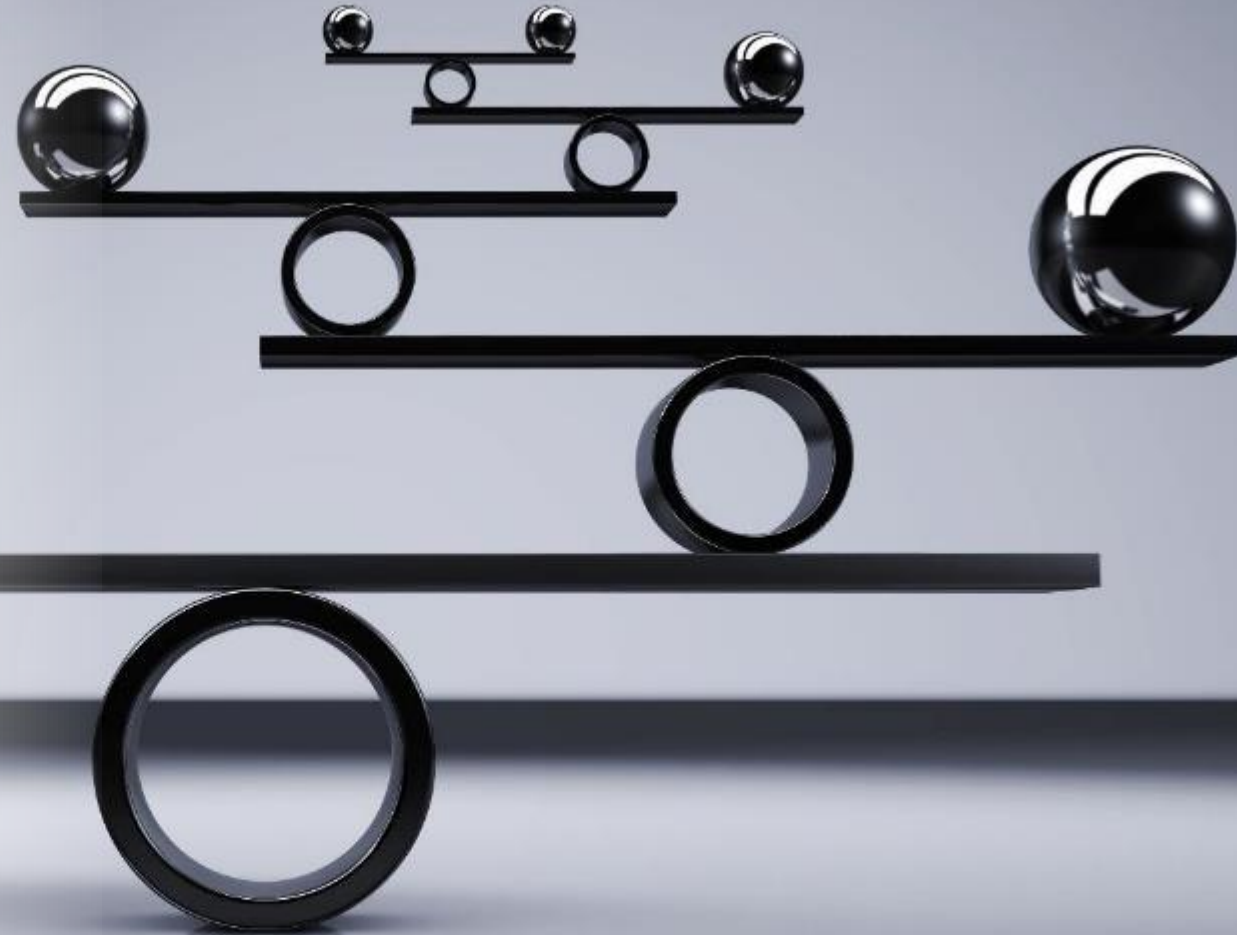
"You can always see the glass...

half-full or half-empty...

...for Water JPI...

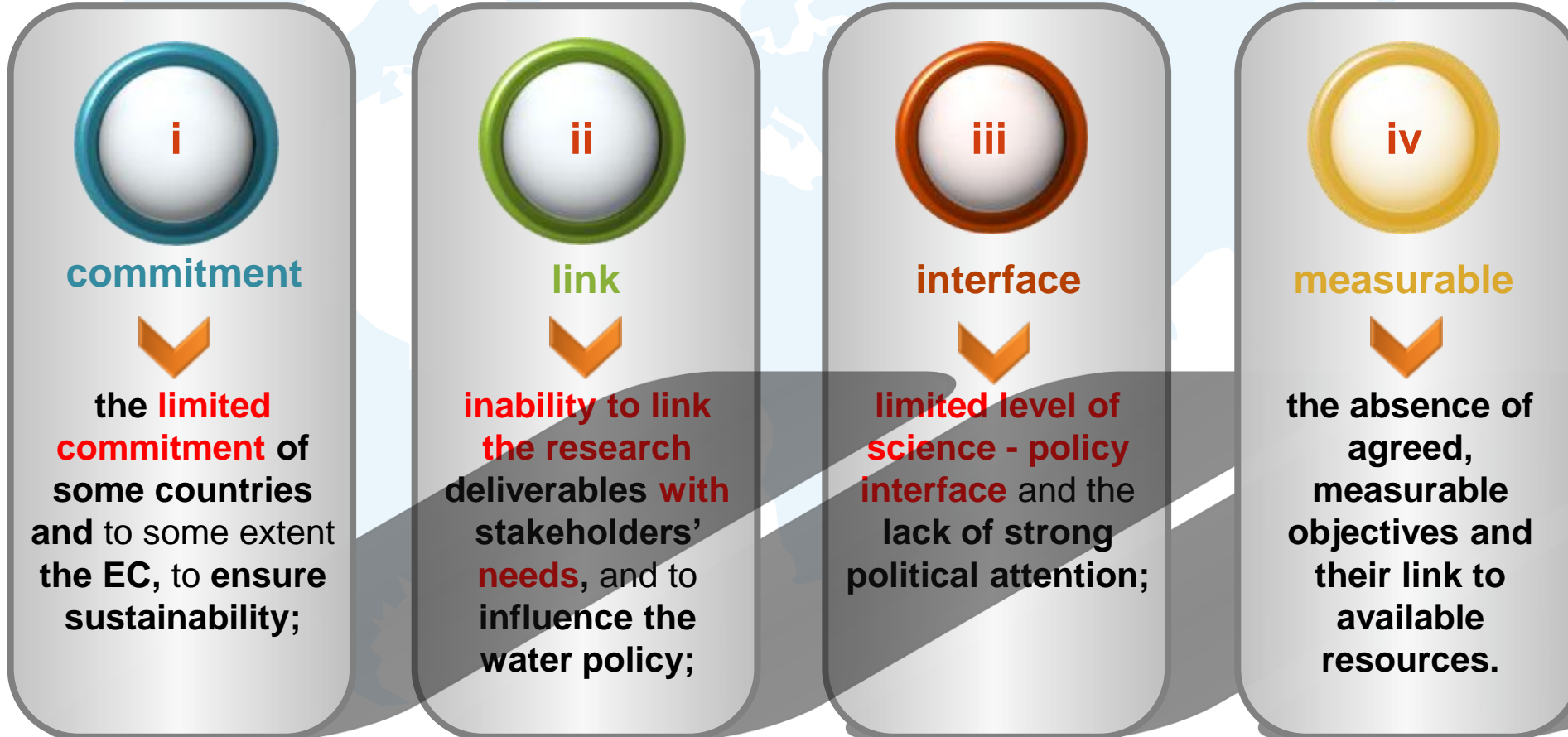
the glass is definitely half-full..."

(Panos Balabanis)





Main weaknesses:





Overall Assessment



Water JPI Impact Assessment

aggregate
result...

did not quite
reach the level
of initial
ambition,

as not all
aspects /
dimensions
were developed
to a high
standard...



...the level of
ambition had been
set very high from
the outset...
the difficulties and
circumstances that
existed when
Water JPI started
its operation
cannot be ignored.



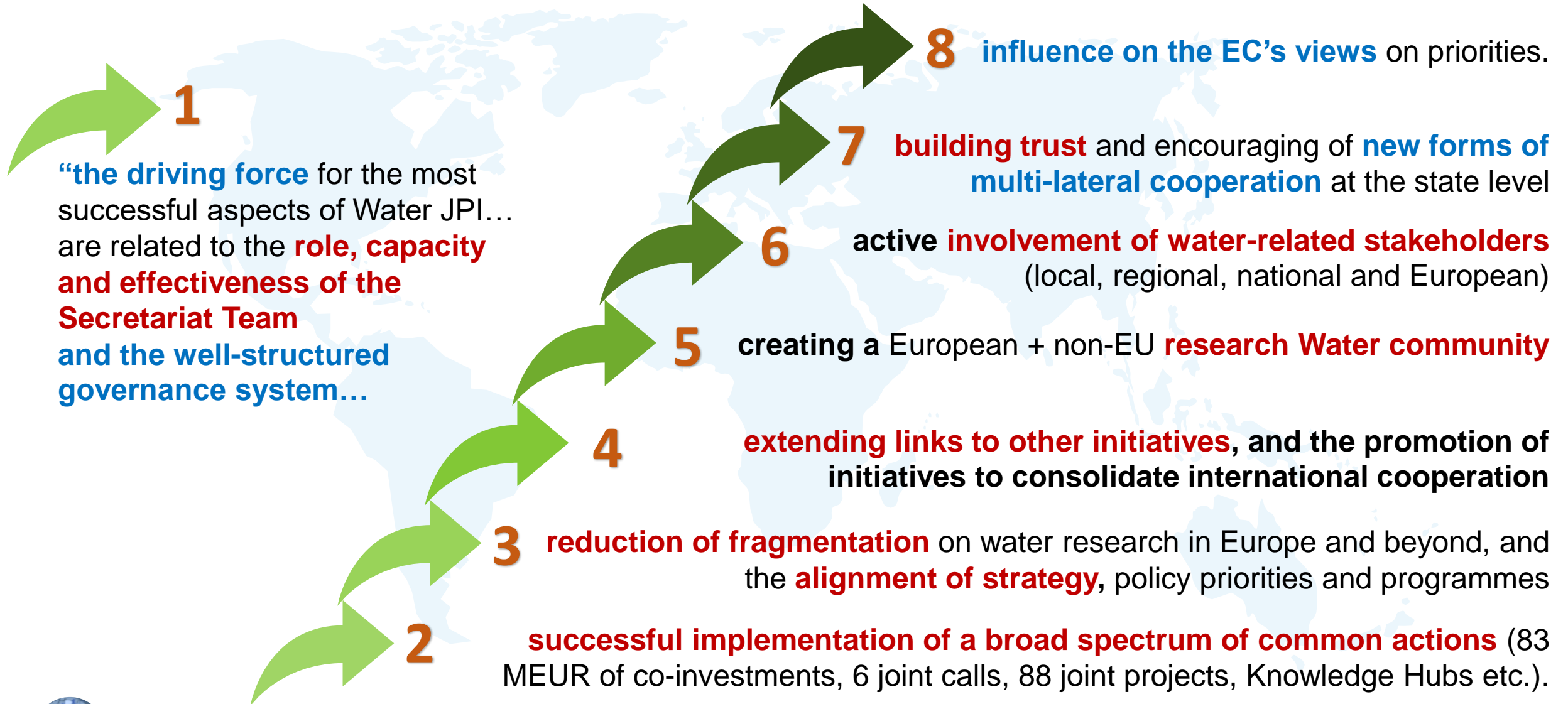


Overall Assessment

aspects with a positive impact

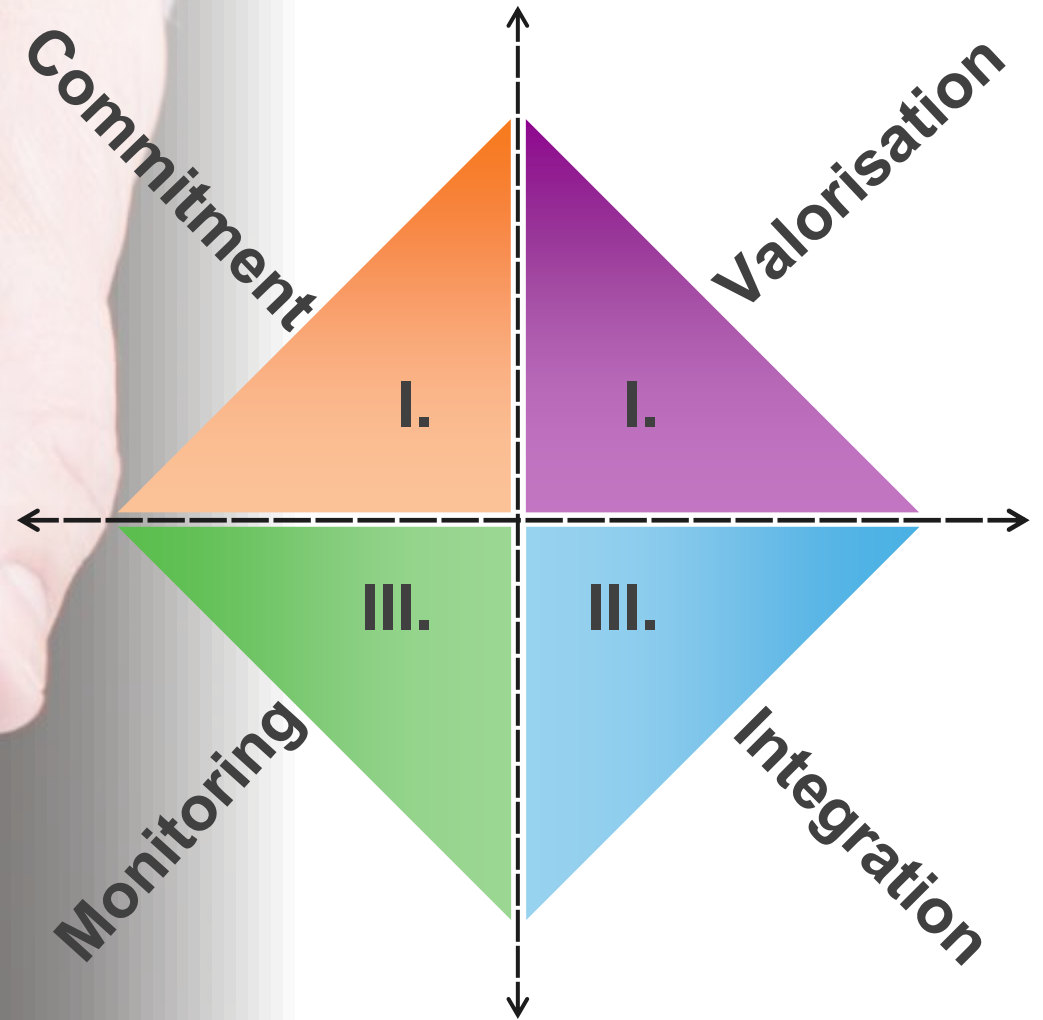
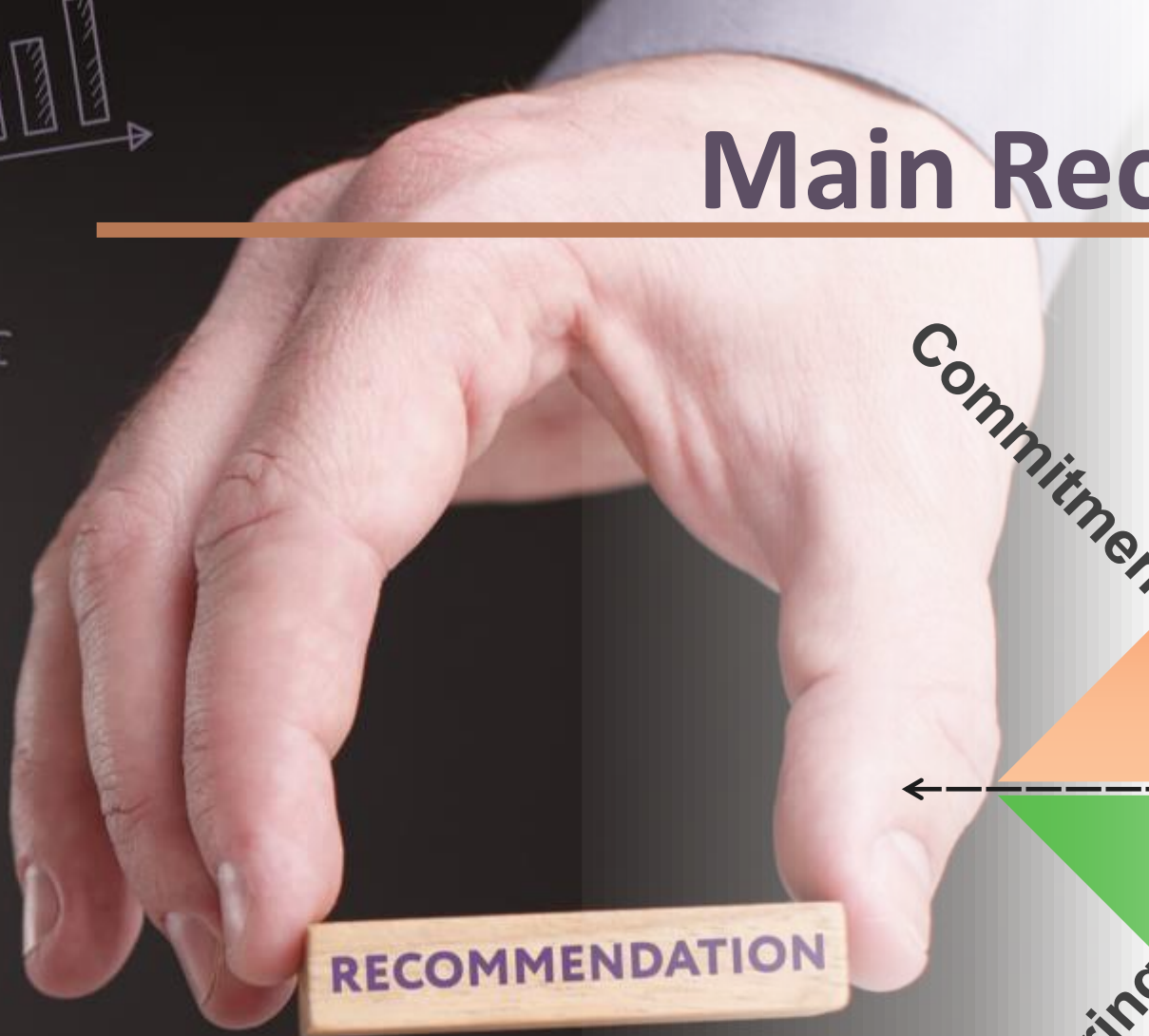


Water JPI Impact Assessment



“the Panel’s opinion is that the overall impact of the Water JPI is positive”

Main Recommendations



A low-angle shot of numerous national flags flying from tall poles in front of a modern, light-colored building. The flags are arranged in a diagonal line from the bottom left towards the top right. The sky is clear and blue. The text 'Strong & Long-term National & EC Commitment' is overlaid on the right side of the image, with 'Strong & Long-term' in dark blue, 'National & EC' in red, and 'Commitment' in yellow with a blue outline.

**Strong &
Long-term
National & EC
Commitment**



MS & EC Commitment

“Water Challenges are Common...”



A photograph of the Golden Gate Bridge in San Francisco, California, taken from a low angle on the left side of the bridge. The bridge's iconic orange-red towers and suspension cables are prominent. The bridge spans across a body of water, with the second tower visible in the distance. The sky is a mix of blue and orange, suggesting a sunset or sunrise. The water is a deep blue. The overall mood is serene and majestic.

Valorisation Strategy

*“...to **bridge the gap** between
science - policymaking and
research - practical exploitation of results...”*



Valorisation Strategy

effective mechanism
to promote and monitor
valorisation of results



Valorisation
Strategy

focus on translation of
research outputs into
policy advice & the
global outreach.

*science &
research*

*policymaking &
practical exploitation of results*

the most significant weakness of the Water JPI has been the inability to ensure that
the research community delivers what societal stakeholders really need...



Monitoring Mechanism

a Reflexive Approach...

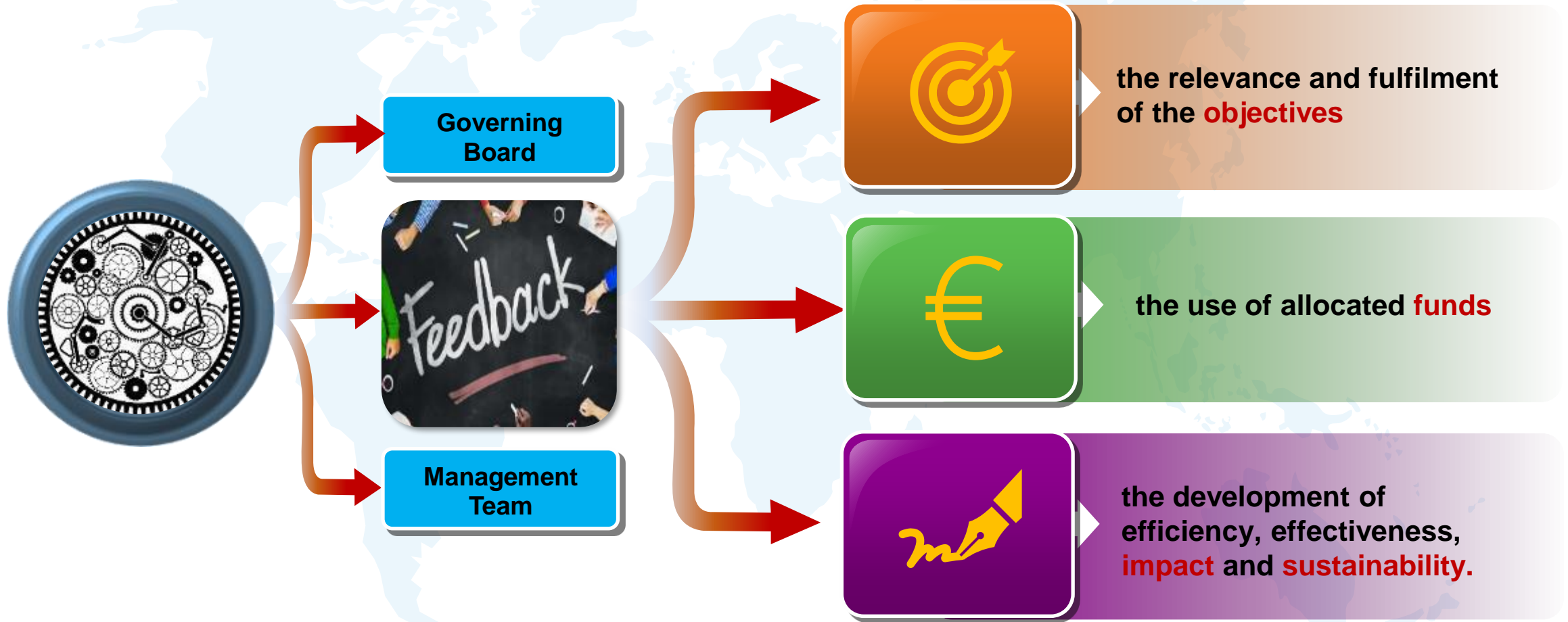
Monitoring and evaluation go hand in hand – neither is more important than the other.

Monitoring ensures that the right thing is done, while evaluation ensures that the right outcomes are achieved.





Monitoring Mechanism



Its operation should be based on a systematic collection of data using well designed and agreed indicators...



Integration into Water4All

*joint and coordinated action
is the only way to meet the
water challenges...*



Integration into Water4All



A scenic view of a Norwegian fjord. In the foreground, a small white motorboat with a person on board is moving across the dark blue water, leaving a white wake. The background features steep, rugged mountains covered in patches of snow and ice. The sky is a clear, deep blue with a few wispy clouds. The overall atmosphere is serene and majestic.


Overarching Recommendation

... the cornerstone to build the new joint efforts.

A red maple leaf is floating in a small, clear pool of water that has collected on a rough, grey stone surface. The leaf is vibrant red with some darker, almost black, veins and edges. The water is still, creating a clear reflection of the leaf. The stone surface is textured and uneven, with some areas appearing lighter and others darker. The overall scene is a close-up, focusing on the leaf and the water.

**Long-term
strategy...**

***...all
should be invited
to jointly consider
their longer-term
strategy to
address the water
challenges in
Europe and
beyond.***



MS & EC

Ensure the Transfer

*experience
knowledge
structures,
relationships & links
to the EP Water4All.*

Thank You !

Monday, May 23, 2022

