

# ask & apply

We start at 10:00



Suomen Akatemia  
Finlands Akademi  
Research Council of Finland

# 2026 INTERNATIONAL COLLABORATION IN HIGH- PERFORMANCE COMPUTING

Ask & Apply webinar, 17.3.2026

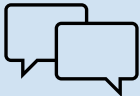
# Welcome to the webinar!



The webinar will not be recorded but the presentation is available after the webinar, Ask & Apply-webpage



Participants microphones and cameras are turned off



The event will be held in English



Questions can be typed during and/or after the presentation in either language in the Q&A.



After the event, please use [our helpdesk \(www.aka.fi/feedback\)](http://www.aka.fi/feedback)

# Today's webinar

Time	Section
10:00 – 10:20	Introduction to the call, evaluation, and decision-making
10:20 – 10:30	CSC instructions on HPC resources
10:30 – 11:00	Q & A
11:00	End of the event

# Call information

# Timeline for the call

- The calls have now been published on our website
  - You can find all the material you need from our call texts and pages they link to
- Calls (online services) will open on April 1, 2026 and close on **May 6, 2026 at 16:15 Finnish time**
  - HINT:** You can submit your application early and edit/supplement until the deadline
- Funding decisions are made in November 2026 by the General Subcommittee.
  - Funding period is 1.1.2027 – 31.12.2029

# Aim of the call

- To support **internationally excellent research where the use of EuroHPC or LUMI supercomputing resources is necessary** for the success of the research project.
- In the present call, the funding is **targeted at the Large Unified Modern Infrastructure (LUMI) and the European High Performance Computing Joint Undertaking (EuroHPC) infrastructures**, at making appropriate use of them and promoting their wide and effective use.
- The themes of the projects **have not been confined to any particular thematic area**, but the call is open to all projects relevant in terms of the **necessary use of EuroHPC or LUMI supercomputing resources** in the attainment of project objectives.
- The project can be multidisciplinary and consortium-based. In a consortium-based project, the **cooperation between the parties creates added value** in the expansion of expertise in high-performance computing.

# Who can apply

- Applications are invited from **individual research teams and consortia** composed of two or more teams.
- The consortium parties may represent one or several research organisations.
- **In addition to a doctoral degree, the principal investigator (PI) of the proposed project must also have other significant scientific merits.** Usually, the PI is a researcher at the professor or docent (adjunct professor) level. These criteria also apply to subproject PIs in consortia. In addition, the **applicant must have a close connection with Finland** to support the implementation of a multi-year project. This connection must be evident from the application.

# Funding to be applied for

- Up to **500,000 euros** for an individual project, up to **1 million euros in total for a consortium-based project** and up to 500,000 euros for a consortium subproject.
- Intended towards **the salaries of persons who work full-time on the project and for other project costs.**
- The funding is **granted to a Finnish site of research** through which the funding is paid.
- Funding granted by the RCF is co-funding. The RCF's contribution to the **funding is up to 70% of the total costs**, and the site of research will cover at least 30% of the total costs. [Research Council of Finland's funding terms and conditions](#) apply.
- You can apply for funding to cover, for example, the following direct research costs:
  - research team salaries
  - PI's salary costs (under certain limitations) **>> now reduced to maximally 4,5 months in total (new!)**
  - salaries of researchers returning to Finland
  - necessary costs arising from implementation of research
  - travel expenses
  - cooperation and mobility in Finland
  - international cooperation and mobility
  - preparation of international projects.

**Funding will not be granted for coordination or planning of collaborations.**

# Restrictions: international collaboration is mandatory

- At least one international collaborator must be named in the application. The collaborator must be:
  - **for using EuroHPC resources:** from the European user country of EuroHPC (incl. the UK)
- OR
- **for using the LUMI supercomputer:**
  - from the US states of Colorado, **Minnesota (new!)** or Texas
  - from NASA
  - from Japan
  - from Canada.
- **Attach a collaboration letter to your application!**

## Restrictions: previous funding

- Researchers who were granted funding in the 2024 and 2025 calls for international collaboration in high-performance computing are eligible to apply for funding in this call. However, the **research topic of the planned project must be substantially different from that of the already funded project.** The research topics of researchers who were granted funding in earlier calls than these are not restricted.
- However, as always: Funding will not be granted for the same purpose as previously funded under other RCF calls.

# Evaluation and decision process



Applications are evaluated in two phases. First, at least two experts provide an **individual review** for each application. Applications with a score of 5 or 6 proceed to the panel review.



The panel discusses applications that reached the panel review phase in a remote meeting. The panel decides **ratings** for each application. Applications that receive a panel rating of 5 or 6 **for both the overall rating and** the implementation of the call objective are ranked



The panel's **summary assessment** is written for each application during the meeting based on the discussions and the individual reviews.



General subcommittee decides on the funding based on the **review reports** and the **ranking** of the panel, and takes into consideration all applications to be decided on in relation to the **objectives of the call**.



**Applications of equal merit**, priority shall be given to the application that the subcommittee considers best advances the dismantling of gender stereotypes, promotes diversity in research and the scientific community as well as supports sustainable development.

# Review factors

How the project implements the objectives of the call (see Background and objectives)

Added value of cooperation between the parties to the consortium (if consortium application)

Quality of research: scientific quality, novelty and innovation

Implementation:

- feasibility of research plan, including aspects of responsible science
- expertise, human resources and cooperation, including aspects of responsible science.

# How to prepare the application

## What's new?

- **Estimation of HPC resources to be used** is now needed in your research plan.
- Pay attention to the mandatory **responsible science** and **research security** (more below)



# Responsible science

# Responsible science is a mandatory part of the research plan

All listed points must be fully addressed, as each constitutes a factor in the review and decision-making process.

Also: Applications **will not be processed** if any one of the following four elements is missing:

1. a description of **dimensions related to gender equality and nondiscrimination** in the research, or a justification if not relevant
2. a description of **how equality and nondiscrimination will be promoted** in the composition of the research group and collaborations
3. a description of how **good scientific practice** will be followed in the project
4. a description of how **open access to research publications and research data** will be ensured.



# Research security

# Research security is a mandatory part of the application

The application is not processed, if in the application, you have not identified and assessed the risks related to research security and, where necessary, presented an adequate risk management plan.

Research security is based on a legal requirement, the amendment of the Act on the Research Council of Finland:

- When carrying out the tasks, the Research Council of Finland shall ensure that **research security** and the **risks related to research projects, research collaboration, and the exploitation of research results** are appropriately taken into account.
- In safeguarding research security, **a researcher's right to choose their research topic and methods may not be restricted.**

## Research security - Self assessment and risk management plan

### A) Research security self-assessment:

- **Each applicant must fill in this section.**
- Answer all questions 1–4.
- Please note that answering “Yes” does not prevent you from receiving funding!

### B) Risk management plan:

- **Applicant must fill in this section, if the answer to one or more questions in section A is “Yes”.**
- Answer all questions 1–3

## More information on research security

- [Read more about research security](#)
- [Self-assessment of research security](#)
- Contact the support services at your own organisation
  - Your own organisation knows the context of your research, the risk management practices at your organisation, etc.
- RCF can be contacted for general questions
  - We can't give guidance on the contents of your assessment, whether your assessment is sufficient, or whether a collaborator is risky etc.
  - Please use the questions and feedback form on our web page



# Best practices in preparing your application

# Best practices

- **Read the call text carefully**
- **Start early, submit early**
  - Remember: You can submit your application and supplement/update until the deadline
  - Take note of and respect your organisation's deadlines for budgets, etc.
  - Obtain letter of collaboration in time
- Pay attention to your application's topic, keywords, abstract and public description

## How to get started

- **Start now!** All the material is available for you on our website.
  - Read the section Who can apply? to see whether you meet the eligibility criteria.
  - Find out the **HPC resources** required for the project.
  - **Contact your collaborators**, you will need their letter on time
- Read the evaluation questions carefully before writing the research plan
- Start preparing the **research plan and your CV using our templates**
- Start preparing the **budget for the project with the help of your organisation**
- Check the **needed appendices** and start preparing them
- The call text links to the appendices and other general instructions

A dark blue silhouette of a tree is positioned on the left side of the slide. The tree's trunk is thick and vertical, with a dense canopy of leaves at the top. The root system is highly detailed, showing numerous thick and thin roots extending horizontally and diagonally across the lower half of the frame.

CSC

## Questions?

- You can **type your questions in the Q&A**
- **Contact us primarily via the [helpdesk](#)** (select ‘Application guidance, thematic calls’).
- Technical issues with the online services? Contact us via the [helpdesk](#) (select ‘Online services and other technical questions’).
- Visit the: [A–Z index of application guidelines](#)

**ask &  
apply**



# 2026 International collaboration in HPC: CSC notes

Emmanuel Ory, Development manager, CSC

# Technical considerations

Does the code/framework run on LUMI/other EuroHPC systems?

- CPU?
- GPU?
  - CUDA/HIP? OpenMP/OpenACC? Kokkos/SYCL/...?
- [List of EuroHPC JU supercomputers](#)

## **CSC is happy to help you in:**

- Determining your need for computing resources
- Determining your need for storage
- Choosing the suitable platform(s) for your project
- Assessing the portability and performance of your code on LUMI and other EuroHPC systems
- Etc.
  - **Contact: [servicedesk@csc.fi](mailto:servicedesk@csc.fi)**

# Computing resources: LUMI and EuroHPC access calls

## LUMI

- <https://lumi-supercomputer.eu/get-started-2021/users-in-finland/>
- <https://lumi-supercomputer.eu/get-started-2021/users-in-europe/>

## EuroHPC

- [https://www.eurohpc-ju.europa.eu/supercomputers/supercomputers-access-calls\\_en](https://www.eurohpc-ju.europa.eu/supercomputers/supercomputers-access-calls_en)

## AI for Science and Collaborative projects

- [https://www.eurohpc-ju.europa.eu/eurohpc-ju-call-proposals-ai-science-and-collaborative-eu-projects\\_en](https://www.eurohpc-ju.europa.eu/eurohpc-ju-call-proposals-ai-science-and-collaborative-eu-projects_en)

# CSC & LUMI information

How to get started

- <https://research.csc.fi/>
- <https://lumi-supercomputer.eu/>

LUMI documentation

- <https://docs.lumi-supercomputer.eu/>
- <https://docs.lumi-supercomputer.eu/runjobs/scheduled-jobs/partitions/>
- <https://docs.lumi-supercomputer.eu/storage/>

# EPICURE project

EPICURE offers a wide range of level 2 and level 3 support services to all the **EuroHPC JU users (= members of a EuroHPC JU project):**

- code porting and project enabling
- performance improvements, benchmarking, and performance analysis
- code optimization
  - intra-node optimization
  - inter-node optimization and scaling-out
- accelerator porting and optimization support (AMD GPUs)
- Additional information: <https://epicure-hpc.eu/>
- Apply for support here: <https://eurohpcsupport.eu/apply-now/>

# LUMI and LUMI-AI

- LUMI will be decommissioned in 2028
- The successor of LUMI called LUMI-AI is currently in procurement (we don't have any information about its architecture yet)
- The planned availability of LUMI AI is in the end of 2027 so well within the funding period of this call

# Q&A

- Q: So is LUMI also a EuroHPC computer here? So can I plan a project based on LUMI with European collaborators? Now it seemed like LUMI is reserved for the Japan/US/... collaborations.
- A: Yes, with European collaborator(s) you can also use LUMI as it is a part of EuroHPC.
- Q: Is the GPU utilization (vs CPU) mandatory to get funding? Last call I've received the following comment from one of the reviewers: " Although the proposal makes a strong case for the necessity of EuroHPC resources, one limitation is that the project does not directly address GPU utilisation, which is central to the EuroHPC and LUMI roadmap."
- A: The use should be explained/justified. There is now a new section in the research plan to guide you in justifying the use of LUMI/EuroHPC. Find the research plan template here: <https://www.aka.fi/en/research-funding/apply-for-funding/how-to-apply-for-funding/az-index-of-application-guidelines/research-plan-structure/>
- Q: About the consortium members and the partner(s) abroad: should these be doing computational work as well?
- A: The collaboration within the project should contribute to the expansion of computing expertise at both national and international level. This will be easier if everyone also does some computational work.

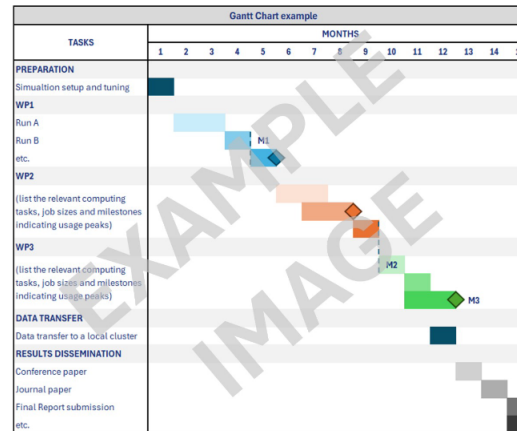
# Q&A

- Q: Can you elaborate estimation of HPC resources needed in the project; which are signs of good planning of resource needs?
- A: A Gantt chart of the simulation plan in production indicating job sizes and scheduling of computing tasks highlighting the consumption peaks can be a sign of good planning:

### 3.1 Gantt Chart

*Provide a Gantt Chart of the simulation plan in production indicating job sizes and scheduling of computing tasks highlighting the consumption peaks. The Gantt Chart should also include a data transfer plan and a communication plan, strategy and timeline for the dissemination of the results.*

*Please take into consideration that the homogenous consumption is encouraged.*



<Enter your text here>

Source: TEMPLATE | Extreme Scale Access - Project Scope and Plan in [https://www.eurohpc-ju.europa.eu/eurohpc-ju-call-proposals-extreme-scale-access-mode\\_en](https://www.eurohpc-ju.europa.eu/eurohpc-ju-call-proposals-extreme-scale-access-mode_en)