

ask & apply

Winter call – how applications are reviewed

We start at 13.00



Suomen Akatemia
Finlands Akademi
Research Council of Finland

Some guidelines

1. First the presentation – then questions and discussion

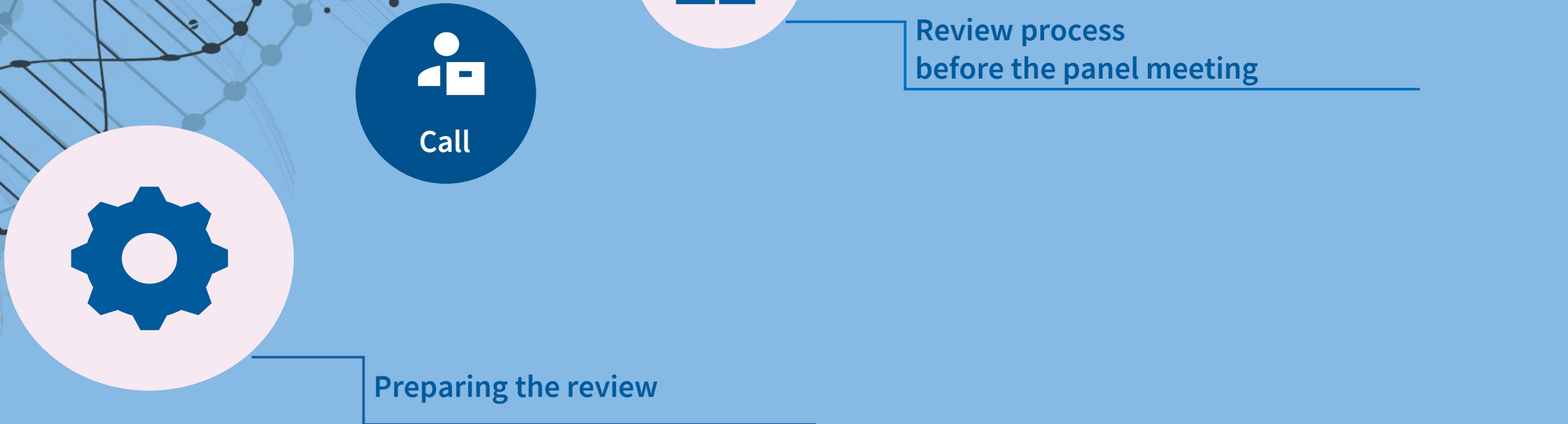
The presentation takes about 15 minutes and we have plenty of time for questions and discussion

2. The webinar presentation will be recorded and made available online for two weeks – Q&A and discussion will not be recorded
3. You can write questions during the presentation on Q&A

Ask & Apply webinars in 2023

1. What's new about the winter call?: **Tuesday 31 October at 13-14**
2. Winter call – How applications are reviewed: **Thursday 2 November at 13-14**
3. Merits and increased competencies of Academy Research Fellows: **Tuesday 21 November at 13-14.30**
4. Academy Programme for Sport Science and Physical Activity: **Thursday 23 November at 13-14**
5. Ask Me Anything – our science advisers answer your questions **Tuesday 12 December at 13-14**

Winter call – how applications are reviewed





Preparing the review

- The new panel structure was designed based on
 - analysis of previous years' applications and their distribution across scientific disciplines and themes
 - aim to decrease the number of panels to adapt to the shorter timeline in winter call
 - feedback received in public consultation
 - benchmarking the panel structure in international research funding organizations
- Science advisers recruit reviewers mainly before the call closes
- Reviewers are esteemed international researchers in the field of the panel
- Secrecy, integrity and conflicts of interest are taken into account throughout the review process

Responsible researcher review



Signatory of
DORA
San Francisco Declaration on
Research Assessment

ask&
apply



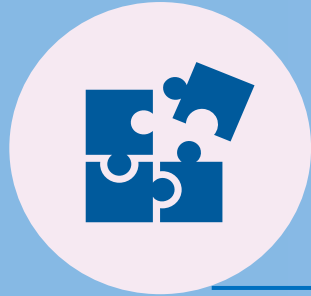
Reviewers are asked to:

- Consider the **content and quality of publications**, rather than their number or venue of publication, or the impact of the journals in which they were published
 - Applicants may not include citation metrics or journal-based metrics to their application
- Consider the **value and impact of all research outputs**, not only publications
- **Be sensitive to legitimate delays** in publication and personal factors or other types of leave, part-time work and disabilities that may have affected the applicant's record of outputs
- Take into account the applicant's career stage throughout the review
- Base the review mainly on a qualitative peer review of the research plan

Winter call – how applications are reviewed



Preparing the review



Review process
before the panel meeting



Reviewers' work
at the panel meeting



Decisions



42 review panels to select from

RC24_01 Arts and literature	RC24_02 Atmospheric sciences	RC24_03 Bioinformatics and systems biology	RC24_04 Biomedical engineering	RC24_05 Biotechnology, biomedical materials, developmental biology and stem cell technologies	RC24_06 Cancer and immunology	RC24_07 Cell and molecular biology, and biochemistry	RC24_08 Chemical and process engineering	RC24_09 Chemistry
RC24_10 Clinical medicine	RC24_11 Communications engineering and electronics	RC24_12 Computer science and software engineering	RC24_13 Cultural studies and gender studies	RC24_14 Data science, artificial intelligence and statistics	RC24_15 Earth systems	RC24_16 Ecology and evolutionary biology	RC24_17 Economics, and business and management	RC24_18 Ecosystems, energy flow and biogeochemical cycles
RC24_19 Education	RC24_20 Energy engineering	RC24_21 Environmental social science and human geography	RC24_22 Fundamental physics of matter and light and quantum information science	RC24_23 History and archaeology	RC24_24 Human factors and technology design	RC24_25 Law, rights and regulation	RC24_26 Lifestyle, life course and public health	RC24_27 Linguistics and language studies
RC24_28 Materials science and applied photonics	RC24_29 Mathematics	RC24_30 Mechanics, structural and materials engineering	RC24_31 Neuroscience	RC24_32 One health, food sciences and veterinary sciences	RC24_33 Philosophy, theology and the study of religions	RC24_34 Physical activity and sport science	RC24_35 Plant and forest sciences	RC24_36 Politics and international relations
	RC24_37 Psychology, behaviour and learning	RC24_38 Robots, automation and production design	RC24_39 Sociology, demography and social work	RC24_40 Universe sciences and subatomic physics	RC24_41 Welfare, wellbeing and health	RC24_42 Clinical researcher funding instrument		

RC24_05 Biotechnology, biomedical materials, developmental biology and stem cell technologies

Scope

- The panel includes basic and applied research using all organisms on biotechnology and bioengineering, developmental biology and stem cell research (including organoids and tissue regeneration), biomedical materials and nanomedicine. Research on pharmacology related to drug targeting and delivery to tissues, and toxicology of the engineered materials and therapeutics are also included.

Keywords

- biomedical materials, biotechnology (microbial, industrial, medical and pharmaceutical), bioengineering and synthetic biology, biophysics, developmental biology, stem cells, pharmacology, toxicology

[Panel structure for winter 2024 call \(aka.fi\)](#)

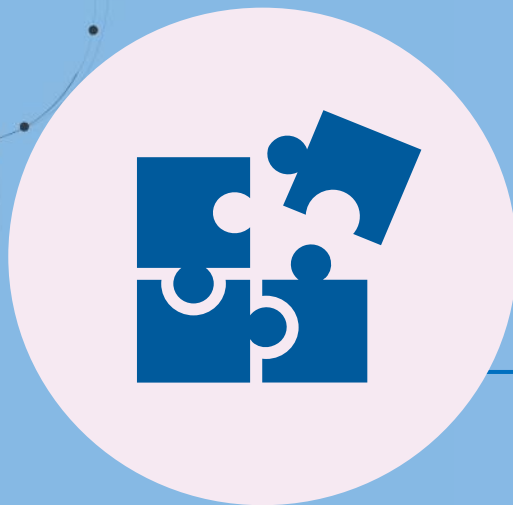
The applicant selects a review panel

1. Examine several panel descriptions in your field and carefully read both the scope and keywords before choosing the panel.
2. Choose one panel and one scientific council in your application. None of the panels are linked to a particular scientific council as such.
3. Submit your application to the most relevant panel. **Your panel selection is binding.** We may reallocate applications only if there has been an obvious typographical or other clear error in the selection. The applicant will be informed in such cases.

Please note:

- Any topic is welcome, regardless of whether it is explicitly stated in panel descriptions. Panels are typically multidisciplinary.
- The lists of keywords in panel descriptions are non-exhaustive; their aim is to guide applicants' panel selection.
- The panel structure does not represent any scientific classification as such. The numbering, names or descriptors of panels do not reflect any priorities.
- The panel structure is revised regularly (for scientific and/or operational reasons).
- Note: panel RC24_42 will review applications for Clinical Researcher funding and will not be available for other applicants.

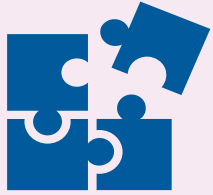
Winter call – how applications are reviewed



Reviewers' work at the panel meeting

Review process before the panel meeting

Preparing the review



Review process before the panel meeting

An applicant has selected the panel for their application

The applications are assigned to reviewers
(2 individual reviews/application)

A review may be requested from an expert outside the panel to provide additional knowledge

The applications that reach rating 5 or 6 in any of the individual reviews will proceed to panel

The applications rated 1 to 4 will proceed to the decision-making phase

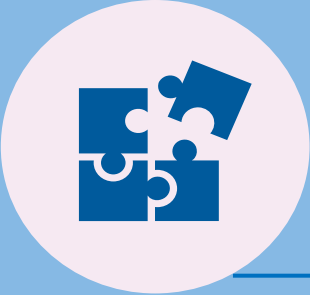
Scale of rating

Description	Rating
Demonstrates extremely high novelty and/or innovation; has potential to substantially advance science at global level; presents a high-gain plan that may include risks	6 (outstanding)
Is very good in international comparison – contains no significant elements to be improved	5 (excellent)
Is in general sound but contains some elements that should be improved	4 (very good)
Is in general sound but contains important elements that should be improved	3 (good)
Contains flaws and needs substantial modification or improvement	2 (fair)
Contains severe flaws that are intrinsic to the proposed project or the application	1 (poor)

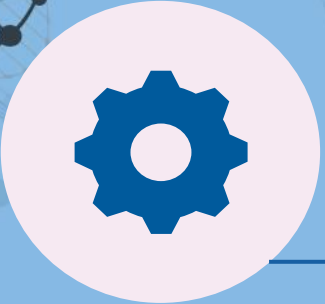
Winter call – how applications are reviewed



Reviewers' work at the panel meeting



Review process before the panel meeting



Preparing the review



Reviewers' work at the panel meeting



All panellists have access to all applications and reviews before the panel meeting



Panellists discuss the applications and decide the ratings



The panel writes a summary assessment section on each application based on the discussions and the individual reviews



Panels also rank the strongest applications (final overall rating 5–6)

Review form at different stages of the review process

Individual reviews x 2 (including reviewer's name)

1. Quality of research
 - 1.1 Scientific quality, novelty and innovativeness of research
Sub-rating (1–6)
2. Implementation (incl. responsible science)
 - 2.1 Feasibility of research plan Sub-rating (1–6)
 - 2.2 Expertise, human resources, and collaborations
Sub-rating (1–6)
3. Review panel's summary assessment
 - 3.1 Main strengths and their justifications:
 - 3.2 Main weaknesses and their justifications:
 - 3.3 Other remarks (if any):
- Overall Rating (individual ratings)

Panel review (names of panellists' and the individual reviewers)

1. Quality of research
 - 1.1 Scientific quality, novelty and innovativeness of research
Sub-rating (1–6)
2. Implementation (incl. responsible science)
 - 2.1 Feasibility of research plan Sub-rating (1–6)
 - 2.2 Expertise, human resources, and collaborations
Sub-rating (1–6)
3. Review panel's summary assessment
 - 3.1 Main strengths and their justifications:
 - 3.2 Main weaknesses and their justifications:
 - 3.3 Other remarks (if any):
- Overall Rating (individual ratings and final panel rating)


Winter call – how applications are reviewed



Decisions
12.-13.6.2024



Reviewers' work
at the panel meeting



Review process
before the panel meeting



Call



Preparing the review



[Calls open 15.11.2023 – 17.1.2024](#)

READ THE CALL TEXT CAREFULLY

• Contact details according to your
Scientific Council

[Review panels - Research Council of Finland](#)

[Guides for reviewers](#)

[Helpdesk](#)

[Ask&Apply Webinars 2023](#)

[Funding statistics for September
2022 call](#)

[Panel feedback: SSH, BHE, NSE](#)

Time for Questions and Answers



Please write your questions in Q&A

**ask &
apply**